

(SXC8.SXC) 23334

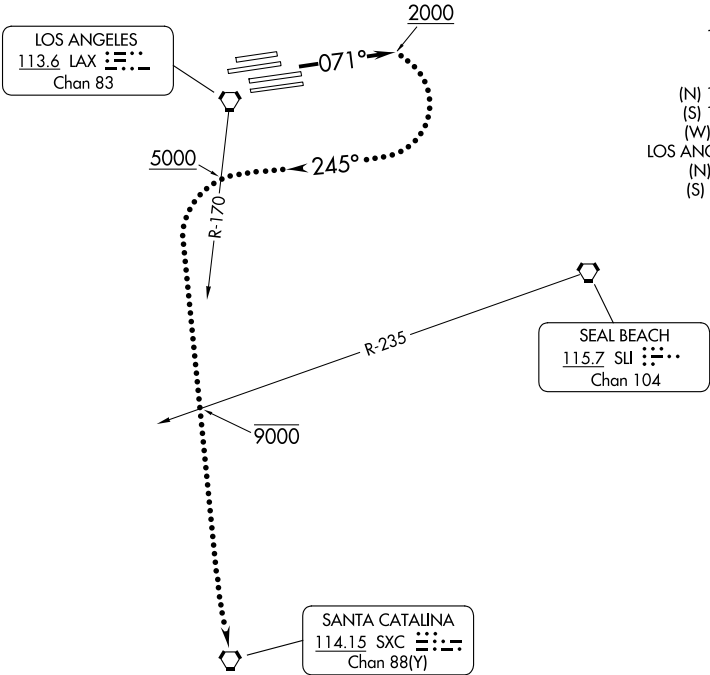
CATALINA EIGHT DEPARTURE

AL-237 (FAA)

LOS ANGELES INTL (LAX)  
LOS ANGELES, CALIFORNIA

TOP ALTITUDE:  
ASSIGNED BY ATC

SOCAL DEP CON  
124.3 363.2 (045°-224°)  
125.2 263.025 (225°-044°)  
D-ATIS DEP  
135.65  
CLNC DEL  
120.35 327.0  
CPDLC  
GND CON  
(N) 121.65 327.0  
(S) 121.75 327.0  
(W) 121.4 327.0  
LOS ANGELES TOWER  
(N) 133.9 239.3  
(S) 120.95 379.1



TAKEOFF MINIMUMS  
Rwys 24L/R, 25L/R: NA-Operational.  
Rwys 6L/R, 7L/R: Standard.

NOTE: RADAR required.  
NOTE: This is a RADAR vector departure to  
SXC VORTAC. Route depicted is a lost  
communication procedure only.

NOTE: Chart not to scale.

DEPARTURE ROUTE DESCRIPTION

TAKEOFF RUNWAYS 6L/R, 7L/R: Climb heading 071° for vectors to SXC VORTAC.  
Then on (assigned route). All aircraft expect further clearance to filed altitude  
5 minutes after departure.

LOST COMMUNICATIONS:

TAKEOFF RUNWAYS 6L/R, 7L/R: If not in contact with Departure Control after reaching  
2000', turn right heading 245°. Cross LAX R-170 at or above 5000', then turn left  
and proceed direct SXC VORTAC. Cross SLI R-235 at or below 9000'.

CATALINA EIGHT DEPARTURE

(SXC8.SXC) 17AUG17

LOS ANGELES, CALIFORNIA  
LOS ANGELES INTL (LAX)

SW-3, 10 JUL 2025 to 07 AUG 2025

SW-3, 10 JUL 2025 to 07 AUG 2025