

VORTAC SU 115.7 Chan 104	APP CRS 275°	Rwy Idg TDZE 38 Apt Elev 60	7414
--	------------------------	---	-------------

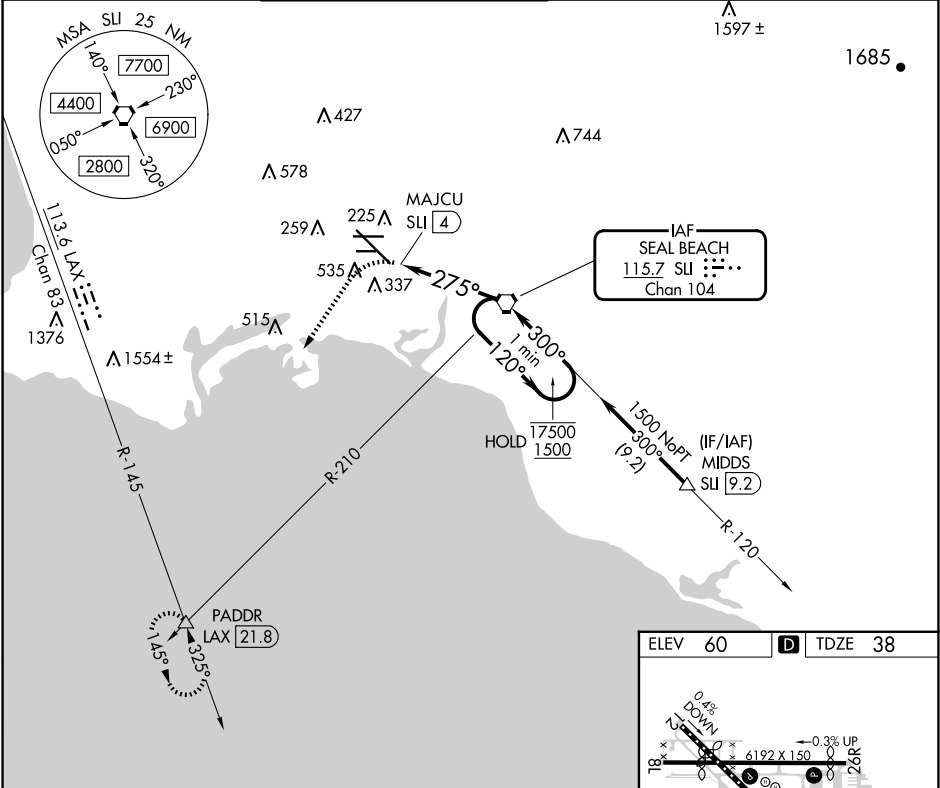
VOR or TACAN RWY 30
LONG BEACH (DAUGHERTY FLD) (LGB)

▼ Rwy 30 helicopter visibility reduction below RVR 4000 NA.
▲ Inop table does not apply.

MALSR

MISSED APPROACH: Climbing left turn to 3000 on heading 200° and LAX VORTAC R-145 to PADRR INT/LAX 21.8 DME and hold.

ATIS 127.75	SOCAL APP CON 125.35 316.125	LONG BEACH TOWER★ 120.5 257.6 (Rwy 12) 119.4 (CTAF) 257.6 (Rwy 30)	GND CON 133.0 257.6	CLNC DEL 118.15	UNICOM 122.95
-----------------------	--	---	-------------------------------	---------------------------	-------------------------



3000 hdg 200° LAX R-145 PADRR △

VGSI and descent angles not coincident (VGSI Angle 3.00/TCH 64)

SU VORTAC

One Minute Holding Pattern

MAJCU SU 4 275° 120° 17500 300° 1500

≤ 2.83° TCH 55

0.8 NM 0.8 NM 3.2 NM

CATEGORY	A	B	C	D
S-30	600/55 562 (600-1)		600-1 562 (600-1½)	
CIRCLING	840-1 780 (800-1)		840-2¼ 780 (800-2¼)	840-2½ 780 (800-2½)

ELEV 60	TDZE 38
---------	---------

TDZ/CL Rwy 30
HIRL Rwy 12-30
HIRL Rwy 8R-26L
MIRL Rwy 8L-26R
REIL Rws 8R, 12, 26L, and 26R

FAF to MAP 4 NM

Knots	60	90	120	150	180
Min:Seq	4:00	2:40	2:00	1:36	1:20

SW-3, 10 JUL 2025 to 07 AUG 2025

SW-3, 10 JUL 2025 to 07 AUG 2025