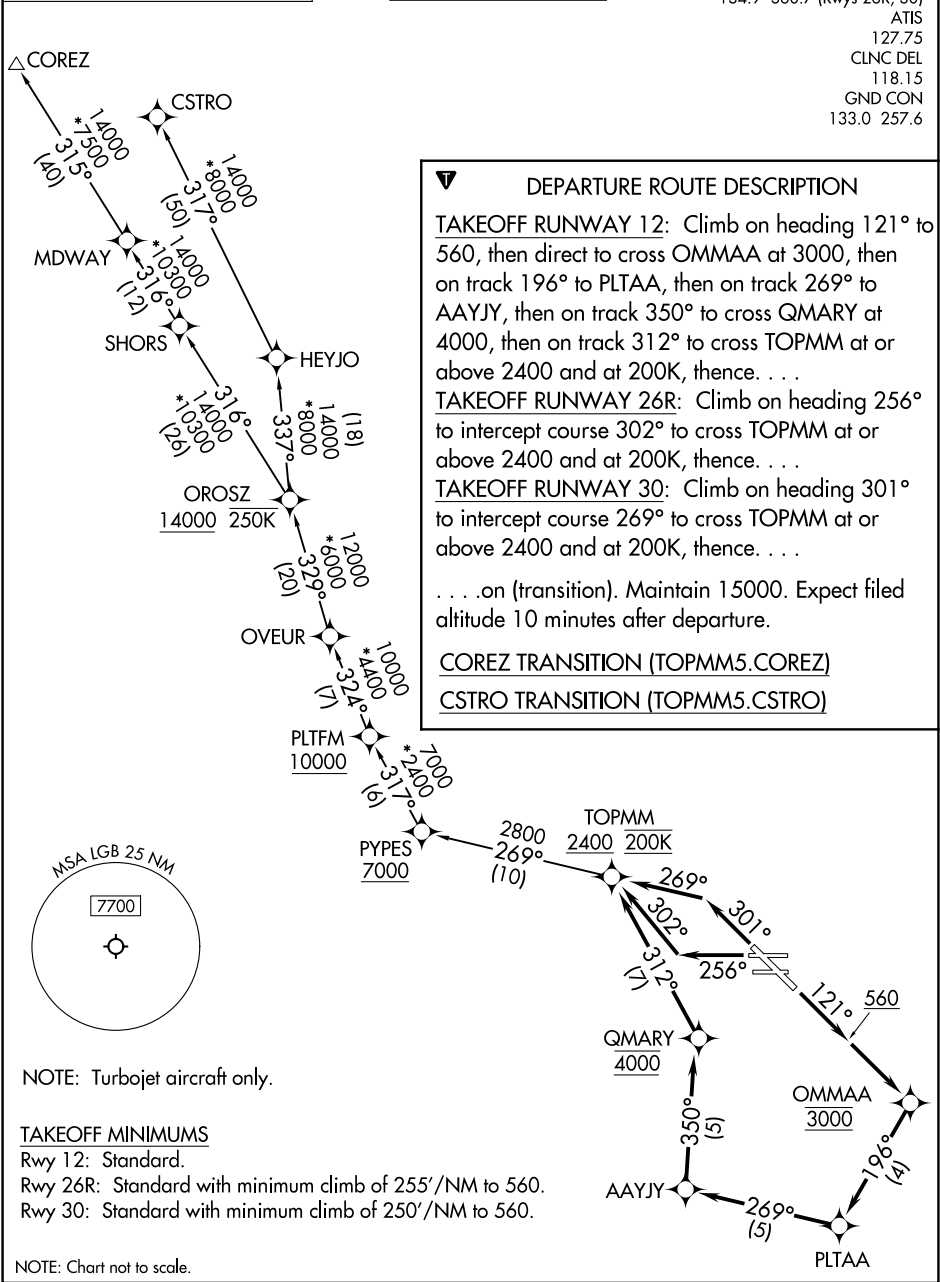


RNAV 1 - DME/DME/IRU or GPS.	TOP ALTITUDE: 15000	SOCAL DEP CON 125.35 316.125 (Rwy 12) 134.9 360.7 (Rwys 26R, 30) ATIS 127.75 CLNC DEL 118.15 GND CON 133.0 257.6
RADAR required.		



SW-3, 10 JUL 2025 to 07 AUG 2025

SW-3, 10 JUL 2025 to 07 AUG 2025