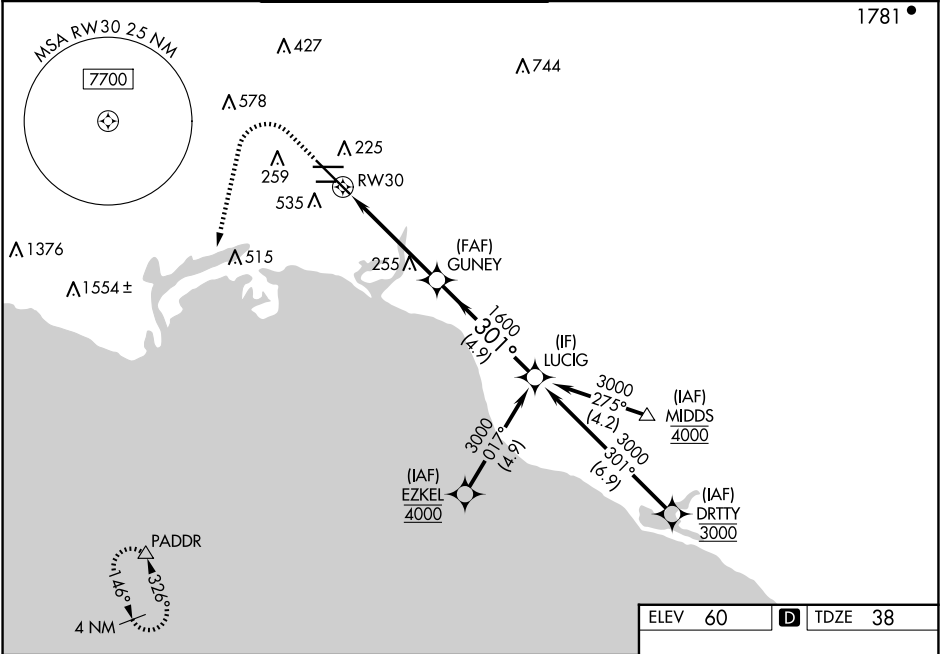


WAAS CH 99521 W30A	APP CRS 301°	Rwy ldg TDZE 38 Apt Elev 60
--	------------------------	---

RNAV (GPS) Z RWY 30

LONG BEACH (DAUGHERTY FLD) (LGB)

RNP APCH. ▼ For uncompensated Baro-VNAV systems, LNAV/VNAV NA below 4°C or above 54°C. For inop ALS, increase LNAV Cat C and D visibility to 1½ SM.			MALSR AS	MISSED APPROACH: Climb to 800 then climbing left turn to 3000 direct PADDR and hold	
ATIS 127.75	SOCAL APP CON 125.35 316.125	LONG BEACH TOWER★ 120.5 257.6 (Rwy 12) 119.4 (CTAF) 257.6 (Rwy 30)	GND CON 133.0 257.6	CLNC DEL 118.15	UNICOM 122.95



800		3000		PADDR		VGSI and RNAV glidepath not coincident (VGSI Angle 3.00/TCH 64).	
↑		↷		△		LUCIG	
*LNAV only							
RW30		* 2.2 NM to RW30		GUNEY		3000	
		1600		301°		1600	
2.2 NM		2.5 NM		4.9 NM		GP 3.00° TCH 58	
CATEGORY	A	B	C	D			
LPV DA	261/18 223 (300-½)						
LNAV/ VNAV DA	568/55 530 (600-1)						
LNAV MDA	520/24	482 (500-½)	520/50	482 (500-1)			
C CIRCLING	840-1	780 (800-1)	840-1½	780 (800-1½)			

ELEV 60 TDZE 38

TDZ/CL Rwy 30

HIRL Rwy 12-30

HIRL Rwy 8R-26L

MIRL Rwy 8L-26R

REIL Rwy 8R, 12, 26L, and 26R