

APP CRS  
**301°**

Rwy Idg  
TDZE  
**38**

Apt Elev  
**60**

**RNAV (RNP) Y RWY 30**

LONG BEACH (DAUGHERTY FLD) (LGB)

RNP AR APCH.

▼

▲

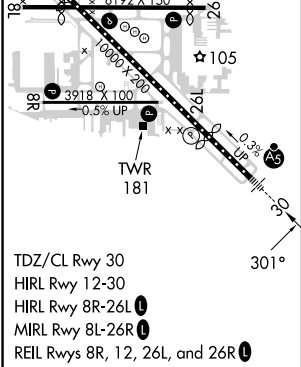
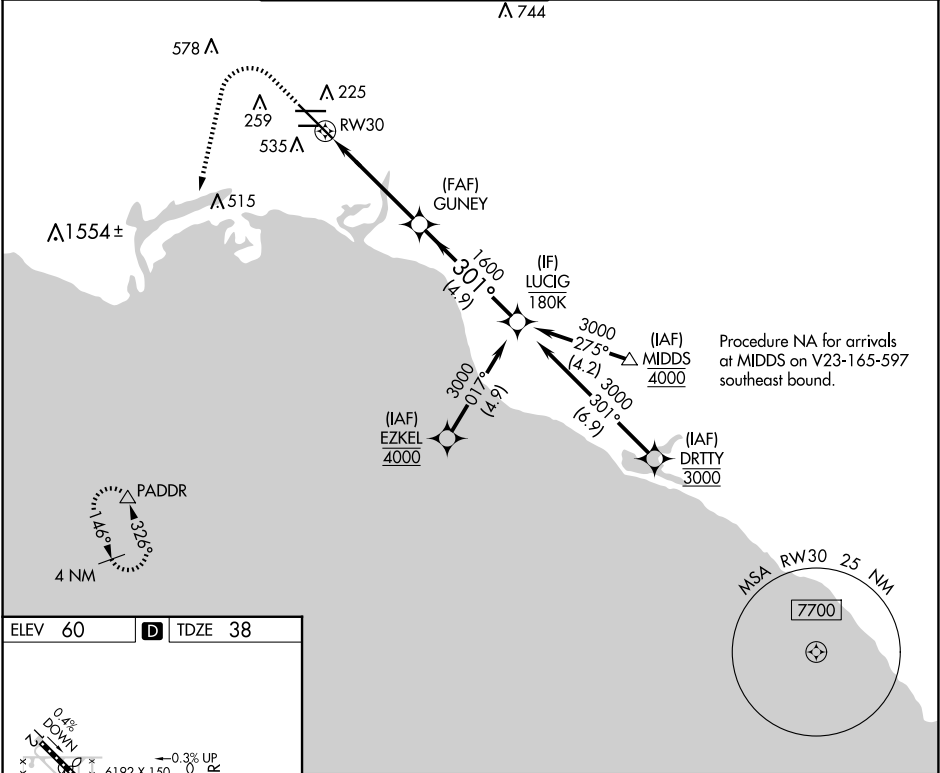
For uncompensated Baro-VNAV systems, procedure NA below 4° C or above 54° C.

MALSR

AS

MISSED APPROACH: Climb to 800 then climbing left turn to 3000 direct PADDR and hold.

ATIS <b>127.75</b>	SOCAL APP CON <b>125.35 316.125</b>	LONG BEACH TOWER★ <b>120.5 257.6</b> (Rwy 12) <b>119.4</b> (CTAF) <b>0 257.6</b> (Rwy 30)	GND CON <b>133.0 257.6</b>	CLNC DEL <b>118.15</b>	UNICOM <b>122.95</b>
-----------------------	--	---	-------------------------------	---------------------------	-------------------------



800

3000

PADDR

VGSI and RNAV glidepath not coincident (VGSI Angle 3.00/TCH 64).

LUCIG

GUNY

1600

301°

3000

GP 3.00°

TCH 58

CATEGORY	A	B	C	D
RNP 0.30 DA	384/30	346 (400-5%)		

**AUTHORIZATION REQUIRED**