

## ARRIVAL ROUTE DESCRIPTION

TCUPS TRANSITION (TCUPS.BAUBB3)

TILLT TRANSITION (TILLT.BAUBB3)

From BAUBB on track 087° to cross STYFF between 7000 and 9000.

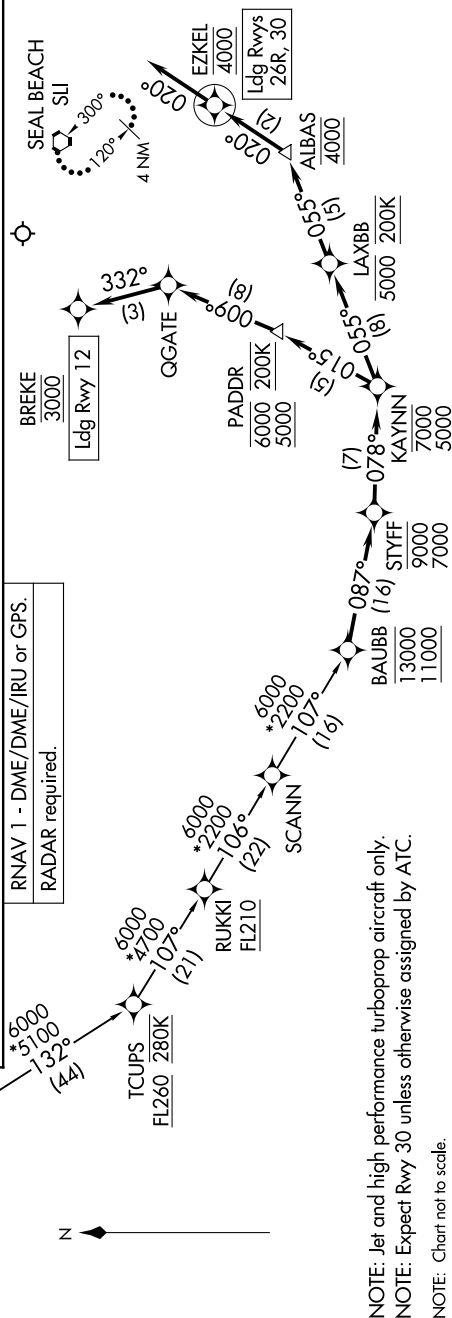
**LANDING RUNWAY 12:** From STYFF on track 078° to cross KAYNIN between 5000 and 7000, then on track 015° to cross PADDR between 5000 and 6000 and at 200K, then on track 009° to QGATE, then on track 332° to cross BREKE at 3000. Expect RNAV (RNP) RWY 12 approach.

LANDING RUNWAYS 26R, 30: From STYFF on track 078° to cross KAYINI between 5000 and 7000, then on track 055° to cross LAXBB at or below 5000 and at 200K, then on track 055° to cross ALBAS at 4000, then on track 020° to cross EZKEL at 4000, then on track 020°. Expect RNAV (RNP) Y RWY 30 on RADAR vectors to final approach course.

## LOST COMMUNICATIONS

RUNWAYS 26R, 30: After ALBAS proceed on the RNAV (RNP) Y RWY 30 or ILS or LOC RWY 30 approach.  
 RUNWAY 12: After BREKE proceed on the RNAV (RNP) RWY 12 approach.

if unable approach to LGB, after ALBAS/BREKE climb to 4000 direct SLI VORTAC and hold.



NOTE: Jet and high performance turboprop aircraft only.

NOTE: Expect Rwy 30 unless otherwise assigned by ATC.

NOTE: Chart not to scale.

SW-3, 10 JUL 2025 to 07 AUG 2025

## BAUBB THREE ARRIVAL (RNAV)

(BAUBB.BAUBB3) 26DEC24

LONG BEACH, CALIFORNIA

LONG BEACH (DAUGHERTY FLD) (LGB)