

25163

LOC/DME I-BWY <u>110.7</u> Chan 44	APP CRS 228°	Rwy Ldg 7200 TDZE 260 Apt Elev 266
--	------------------------	---

ILS or LOC RWY 22L
BILL AND HILLARY CLINTON NTL/ADAMS FLD (LIT)

MALSF

MISSED APPROACH: Climb to 800 then climbing left turn to 3000 on heading 170° and LIT VORTAC R-230 to BAUDE INT/LIT 18.4 DME and hold.

TA

Simultaneous approach authorized.



D-ATIS 125.65	LITTLE ROCK APP CON 135.4 353.6	ADAMS TOWER 118.7 257.8	GND CON 121.9 339.8	CLNC DEL 118.95
-------------------------	---	-----------------------------------	-------------------------------	---------------------------

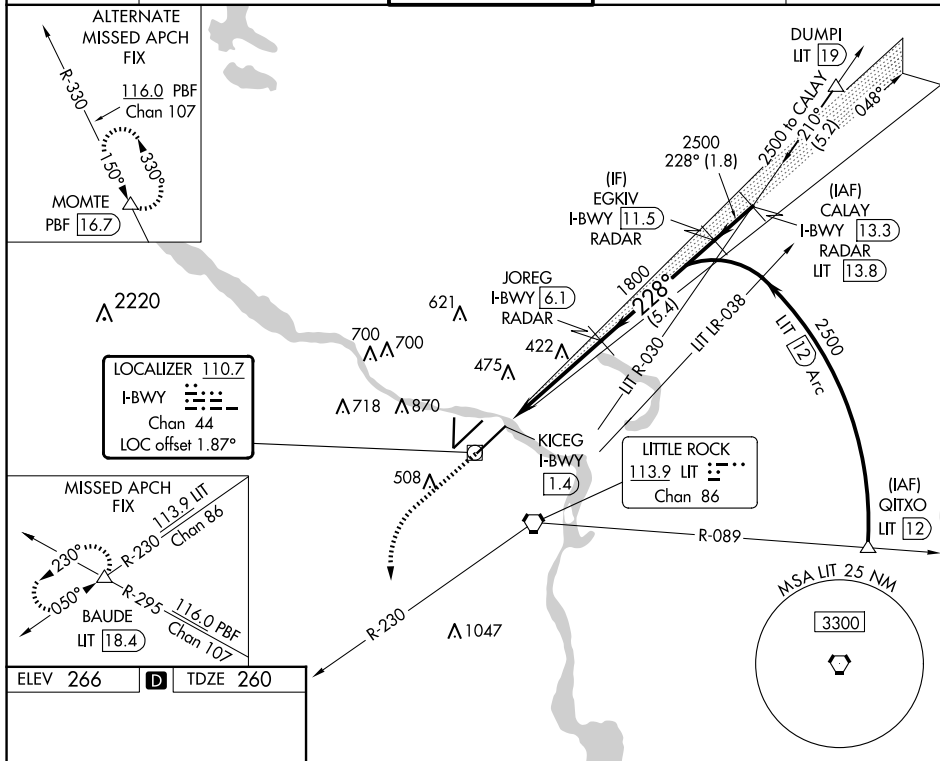


Figure 1: Example of a typical instrument approach chart. The chart displays a 3D perspective view of the approach to MIRM Rwy 18-36. It includes a plan view with a 228° heading, a 3D view showing the runway and surrounding terrain, and a table of approach data. The table includes fields for CATEGORY, S-ILS, S-LOC, and CIRCLING, with values for MSL, AGL, and TCH. The chart also shows a 3D view of the approach with a 228° heading and a 3D view of the runway.

CATEGORY	S-ILS	S-LOC	CIRCLING
22L	510/40	250 (300-34)	820-1 554 (600-1)
22L	640/40	380 (400-34)	1000-1 734 (800-1)
			1180-2 3/4 914 (1000-2 3/4)
			1180-3 914 (1000-3)

LITTLE ROCK, ARKANSAS
Orig-F 16JUL20

34°44'N-92°13'W