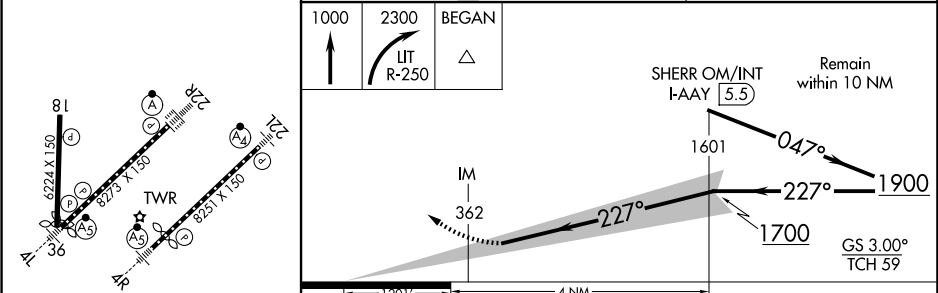
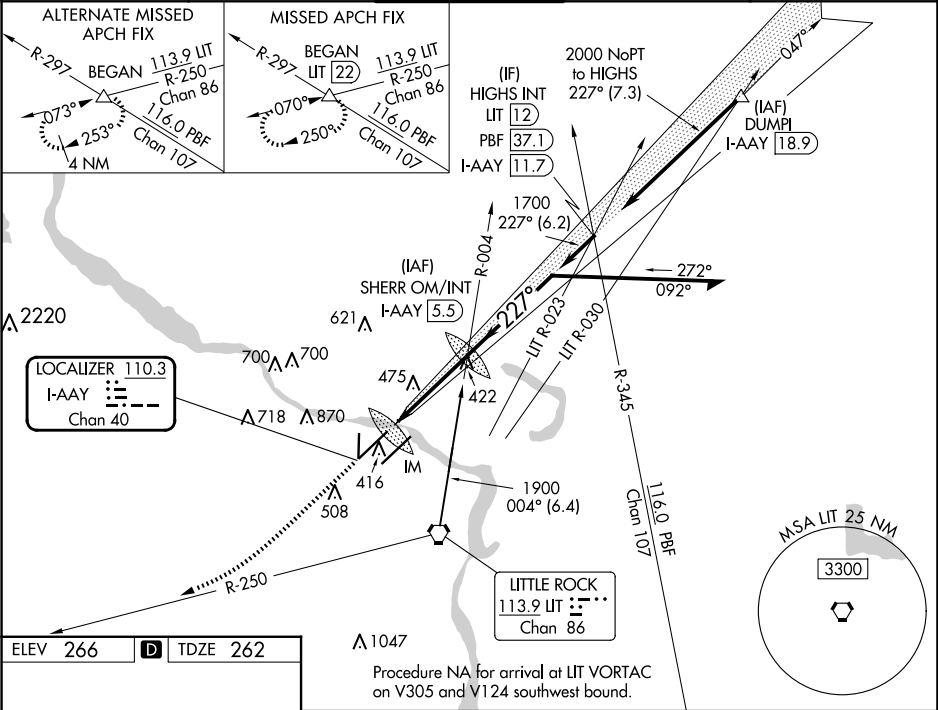


LOC/DME I-AAY	APP CRS	Rwy Ldg	8273
110.3	227°	TDZE	262
Chan 40		Apt Elev	266

ILS RWY 22R (SA CAT I)  
BILL AND HILLARY CLINTON NTL/ADAMS FLD (LIT)

DME required.	Simultaneous approach authorized with Rwy 22L. Requires specific OPSPEC, MSPEC, or LOA approval and use of HUD to DA.	ALSF-2	MISSED APPROACH: Climb to 1000 then climbing right turn to 2300 on UT VORTAC R-250 to BEGAN INT/LIT 22 DME and hold.
---------------	---	--------	--

D-ATIS	LITTLE ROCK APP CON	ADAMS TOWER	GND CON	CLNC DEL
125.65	135.4 353.6	118.7 257.8	121.9 339.8	118.95



CATEGORY	A	B	C	D
S-ILS-22R	RA 182/14 150 DA 412			

SA CATEGORY I ILS - SPECIAL AIRCREW  
& AIRCRAFT CERTIFICATION REQUIRED

SC-1, 10 JUL 2025 to 07 AUG 2025

SC-1, 10 JUL 2025 to 07 AUG 2025