

WAAS CH 69328	APP CRS 322°	Rwy Idg TDZE 1192
W32A		Apt Elev 1219

RNAV (GPS) RWY 32

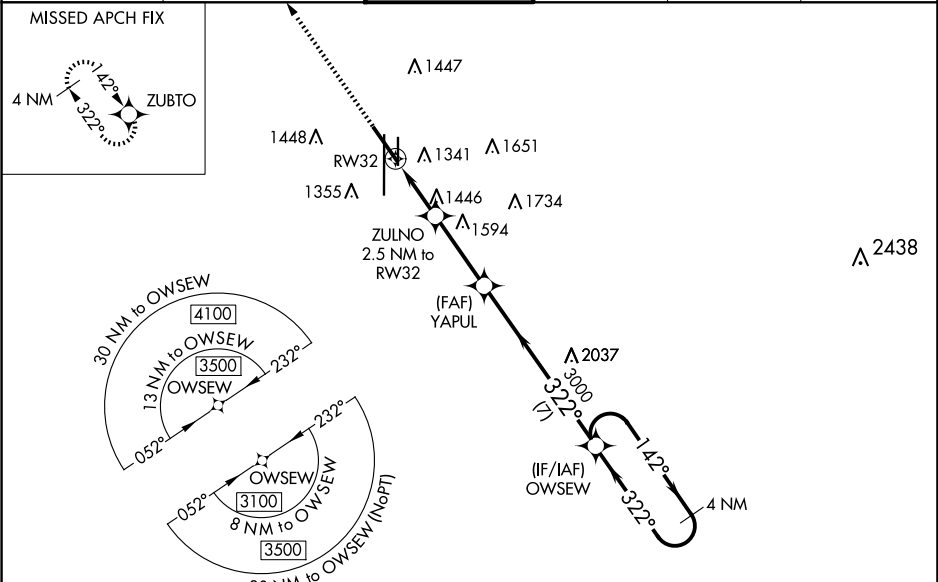
LINCOLN (LNK)

RNP APCH - GPS.

⚠ For uncompensated Baro-VNAV systems, LNAV/VNAV NA below -25°C (-13°F) or above 54°C (130°F). When local altimeter setting not received, use Beatrice altimeter setting and increase all DA 91 feet and all MDA 100 feet, increase LPV all Cats visibility ½ mile, increase LNAV/VNAV all Cats visibility ⅔ mile, increase LNAV Cats C/D and Circling Cats C/D visibility ¼ mile. Helicopter visibility reduction below ¾ SM NA. Baro-VNAV and VDP NA when using Beatrice altimeter setting.

MISSED APPROACH:
Climb to 3200 direct ZUBTO and hold.

ATIS 118.05 290.9	OMAHA APP CON 124.0 270.3	LINCOLN TOWER* 118.5(CTAF) 253.5	GND CON 121.9 275.8	CLNC DEL 120.7 225.4	UNICOM 122.95
-----------------------------	-------------------------------------	--	-------------------------------	--------------------------------	-------------------------



ELEV 1219	D	TDZE 1192
3200 ZUBTO	VGSi and RNAV glidepath not coincident (VGSi Angle 3.00/TCH 54).	OWSEW 4 NM Holding Pattern
*LNAV only	ZULNO 2.5 NM to RW32	YAPUL 3000
1.7 NM to RW32	RW32 1.7 NM to RW32	2020
1.7 NM	0.8 NM	3.1 NM
7 NM		
CATEGORY	A	B
LPV DA	1442-1	250 (300-1)
LNAV/VNAV DA	1576-1¼	384 (400-1¼)
LNAV MDA	1760-1 568 (600-1)	1760-1¾ 568 (600-1¾)
CIRCLING	1760-1 541 (600-1)	1820-1¾ 601 (700-1¾)
		1960-2½ 741 (800-2½)