

WAAS CH <b>40137</b> <b>W17A</b>	APP CRS <b>177°</b>	Rwy Idg <b>5400</b> TDZE <b>1219</b> Apt Elev <b>1219</b>
--	------------------------	---

RNAV (GPS) RWY 17

LINCOLN (LNK)

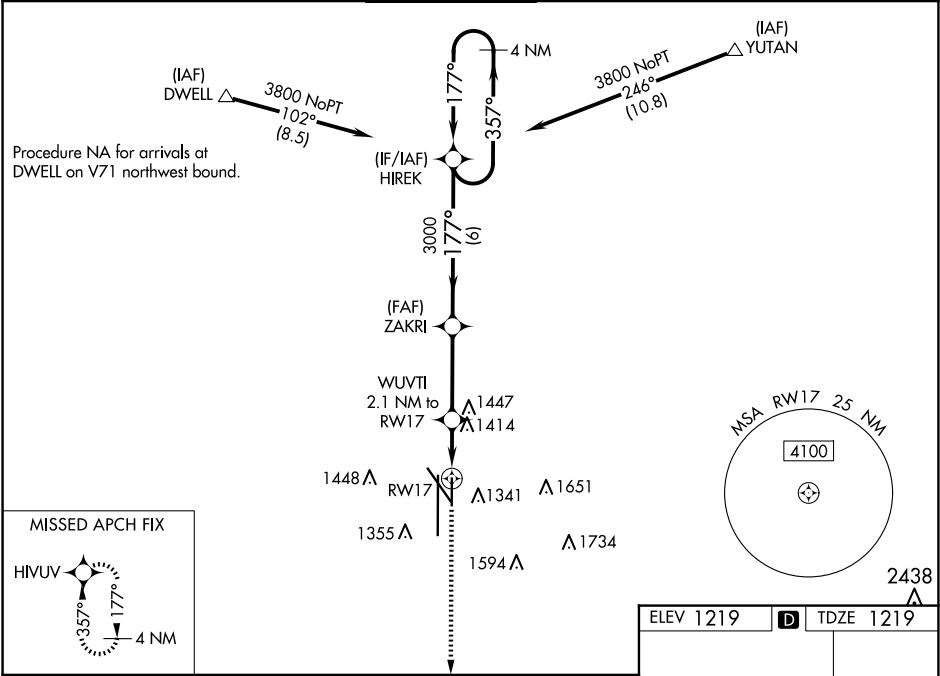
▼

⚠

Baro-VNAV NA when using Beatrice altimeter setting. For uncompensated Baro-VNAV systems, LNAV/VNAV NA below -22°C (-7°F) or above 54°C (130°F). DME/DME RNP-0.3 NA. When local altimeter setting not received, use Beatrice altimeter setting and increase all DA 91 feet, and all MDA 100 feet, increase LPV and LNAV/VNAV all Cats visibility ¼ mile, increase LNAV Cats C/D and Circling Cats C/D visibility ¼ mile.

MISSED APPROACH:  
Climb to 3300 direct  
HIVUV and hold.

ATIS <b>118.05 290.9</b>	OMAHA APP CON <b>124.0 270.3</b>	LINCOLN TOWER* <b>118.5(CTAF) 253.5</b>	GND CON <b>121.9 275.8</b>	CLNC DEL <b>120.7 225.4</b>	UNICOM <b>122.95</b>
-----------------------------	-------------------------------------	--	-------------------------------	--------------------------------	-------------------------



3300	HIVUV	WUVTI 2.1 NM to RW17	ZAKRI 3000	HIREK 4 NM Holding Pattern	357° → 3800 ← 177°
* LNAV only.					
* 1.3 NM to RW17					
RW17					
1.3 NM 0.8 NM 3.4 NM 6 NM					
GP 3.00° TCH 44					
CATEGORY	A	B	C	D	
LPV DA	1419-¾ 200 (200-¾)				
LNAV/VNAV DA	1615-1⅜ 396 (400-1⅜)				
LNAV MDA	1680-1 461 (500-1)		1680-1⅜ 461 (500-1⅜)		
CIRCLING	1680-1 461 (500-1)	1760-1 541 (600-1)	1820-1¾ 601 (700-1¾)	1960-2½ 741 (800-2½)	

