

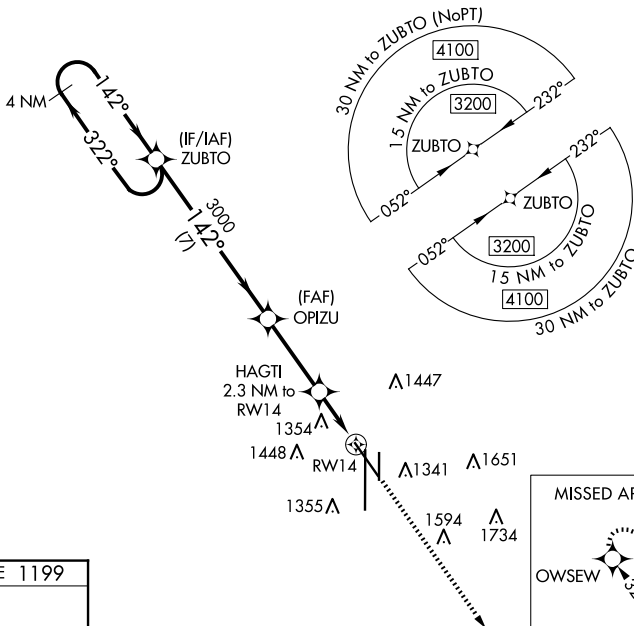
WAAS CH <b>42930</b> <b>W14A</b>	APP CRS <b>142°</b>	Rwy Idg <b>8286</b> TDZE <b>1199</b> Apt Elev <b>1219</b>
--	------------------------	---

RNAV (GPS) RWY 14  
LINCOLN (LNK)

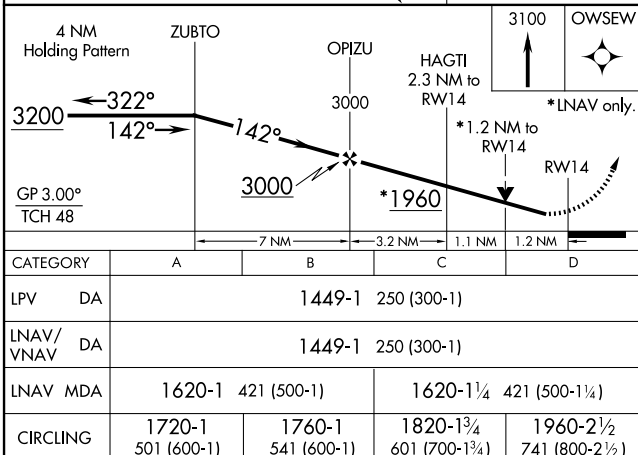
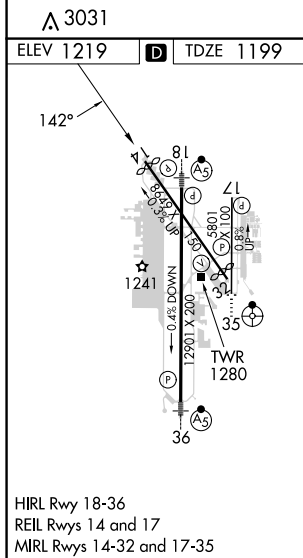
**▼** For uncompensated Baro-VNAV systems, LNAV/VNAV NA below -25°C (-13°F) or above 54°C (130°F). DME/DME RNP-0.3 NA. When local altimeter setting not received, use Beatec altimeter setting and increase all DA 91 feet and all MDA 100 feet, increase LPV all Cats and LNAV/VNAV all Cats visibility ½ mile, increase LNAV Cats C/D and Circling Cats C/D visibility ¼ mile. Helicopter visibility reduction below ¾ SM NA. Baro-VNAV and VDP NA when using Beatec altimeter setting.

**MISSED APPROACH:** Climb to 3100 direct OWSEW and hold.

ATIS 118.05 290.9	OMAHA APP CON 124.0 270.3	LINCOLN TOWER ★ 118.5(CTAF) 253.5	GND CON 121.9 275.8	CLNC DEL 120.7 225.4	UNICOM 122.95
----------------------	------------------------------	--------------------------------------	------------------------	-------------------------	------------------



### MISSED APCH FIX



## RNAV (GPS) RWY 14