

LOC I-OCZ <u>111.1</u>	APP CRS 177°	Rwy Ldg 12901 TDZE 1195 Apt Elev 1219
----------------------------------	------------------------	--

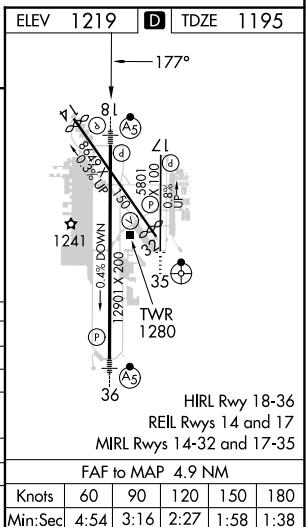
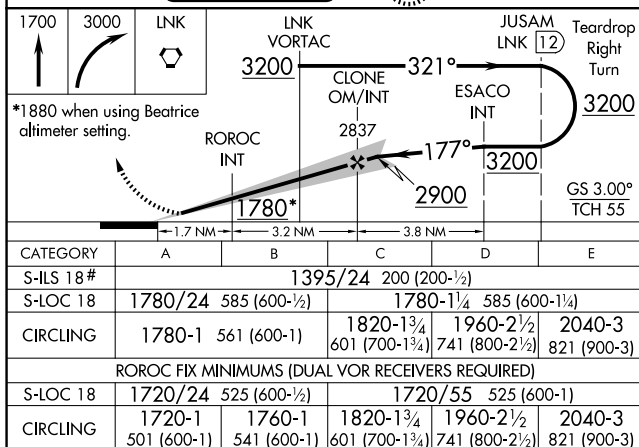
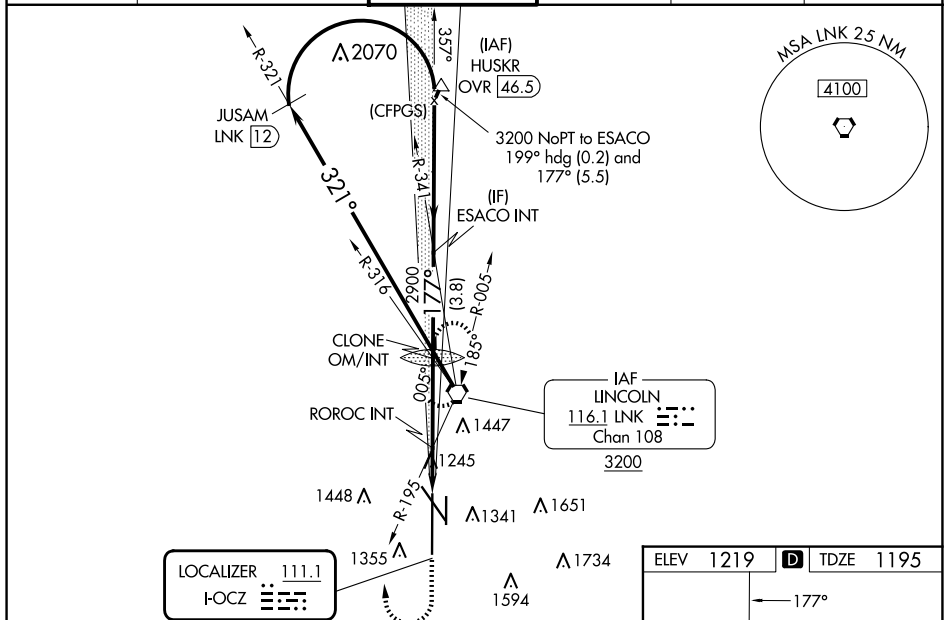
ILS Y or LOC Y RWY 18
LINCOLN (LNK)

⚠ When local altimeter setting not received use Beatrice altimeter setting and increase DA to 1486; and all MDA 100 feet, increase visibility S-LOC 18 Cat C, D, E and Circling Cats C and D $\frac{1}{4}$ SM: increase ROROC fix minimums S-LOC 18 Cat C/D/E visibility $\frac{3}{4}$ SM and Circling Cats C and D $\frac{1}{4}$ SM. For inop ALS, increase S-ILS 18 Cat E visibility to RVR 4000, S-LOC 18 Cat E visibility to $\frac{1}{4}$ SM, and ROROC fix minimums S-LOC 18 Cat E visibility to $\frac{1}{2}$ SM. For inop ALS when using Beatrice altimeter setting, increase S-ILS 18 all Cats visibility to RVR 4500, S-LOC 18 Cat E visibility to $\frac{1}{2}$ SM, and ROROC fix minimums S-LOC 18 Cat C/D/E visibility to $\frac{1}{4}$ SM.
#RVR 1800 authorized with use of FD or AP or HUD to DA.

MALSR

MISSED APPROACH:
Climb to 1700 then
climbing right turn to
3000 direct LNK
VORTAC and hold.

ATIS	OMAHA APP CON	LINCOLN TOWER★	GND CON	CLNC DEL	UNICOM
118.05 290.9	124.0 270.3	118.5(CTAF) 253.5	121.9 275.8	120.7 225.4	122.95



ILS Y or LOC Y RWY 18 LINCOLN (LNK)