

HI-VOR/DME or TACAN RWY 36

VORTAC LNK 116.1 Chan 108	APCH CRS 360°	Rwy Idg 12,901 TDZE 1175 Arpt Elev 1219
-----------------------------------------------	-------------------------	--------------------------------------------------------------------

[USAF]

LINCOLN (KLNK)

RADAR required



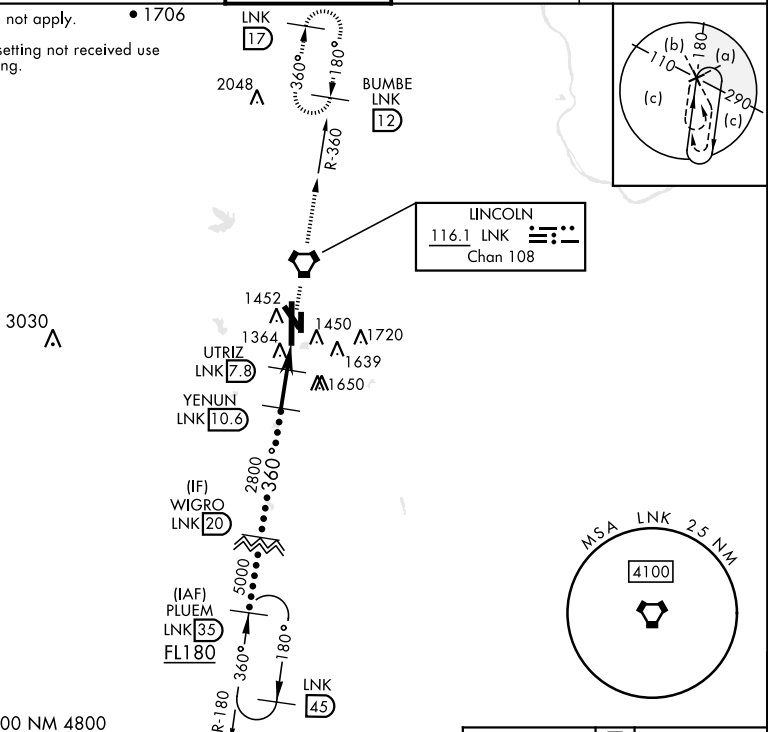
MISSED APPROACH: Climb to 3000 direct LNK VORTAC then via LNK R-360 to BUMBE 12 DME and hold.

★ When ALS inop, increase CAT E vis to 1½ miles.
★★ When ALS inop, increase CAT CDE vis to 1½ miles.

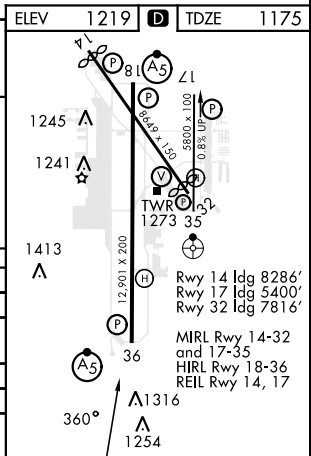
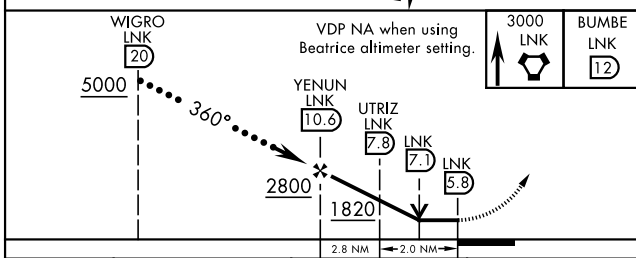
ATIS 118.05 290.9	OMAHA APP CON 124.0 270.3	TOWER ★ 118.5 253.5	GND CON 121.9 275.8	CLNC DEL 120.7 225.4
-----------------------------	-------------------------------------	-------------------------------	-------------------------------	--------------------------------

Inoperative table does not apply. • 1706

When local altimeter setting not received use Beatrice altimeter setting.



EMERG SAFE ALT 100 NM 4800



CATEGORY	C	D	E
S-36 *	1620-7½	445	(500-7½)
CIRCLING	1760-1½ 541 (600-1½)	1820-2 601 (700-2)	2040-3 821 (900-3)
BEATRICE ALTIMETER SETTING			
S-36 **	1720-1½	545	(600-1½)
CIRCLING	1860-1¾ 641 (700-1¾)	1920-2¼ 701 (800-2¼)	2140-3 921 (1000-3)

HI-VOR/DME or TACAN RWY 36