

MALSR
A5

MISSED APPROACH: Climb to 3300 on LNK
VORTAC R-185 to JOGAN (LNK 14 DME) and hold.

ATIS
118.05 290.9

OMAHA APP CON
124.0 270.3

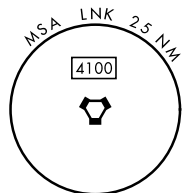
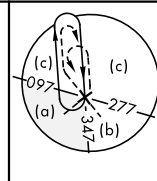
TOWER★
118.5 253.5

GND CON
121.9 275.8

CLNC DEL
120.7 225.4

*** When ALS inop, increase RVR to 45, vis to $\frac{7}{8}$ mile.
† When ALS inop, increase vis to 2 miles.

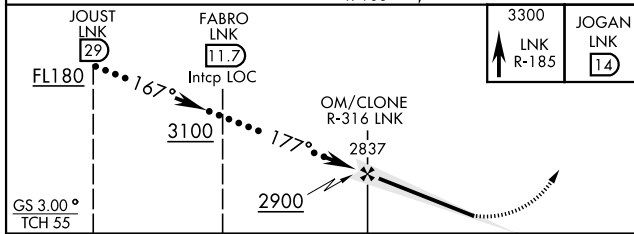
When local altimeter setting not received use Beatrice altimeter.



LOCALIZER 111.1
I-OCZ 

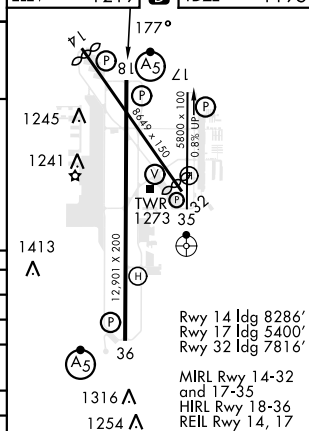
LINCOLN
116.1 LNK 
Chan 108

EMERG SAFE ALT 100 NM 4800



CATEGORY	C	D	E
S-ILS 18*	1395/24	200	(200-½)
S-LOC 18**	1820-1⅓	625	(700-1⅓)
CIRCLING	1820-1⅓ 601 (700-1⅓)	1820-2 601 (700-2)	2040-3 821 (900-3)
BEATRICE ALTIMETER SETTING			
S-ILS 18***	1486/24	291	(200-½)
S-LOC 18†	1920-1⅓	725	(800-1⅓)
CIRCLING	1920-2 701 (800-2)	1920-2½ 701 (800-2½)	2140-3¼ 921 (1000-3¼)

ELEV	1219		TDZE	1195
------	------	---	------	------



FAF to MAP 4.9 NM

Knots	120	140	160	180	200
Min:Sec	2:27	2:06	1:50	1:38	1:28

LINCOLN, NEBRASKA

40° 51'N-96° 46'W

LINCOLN (KLNK)

Amdt 2B 04NOV21

HI-ILS Z or LOC Z RWY 18