

VOR RWY 36

VOR/DME LAW <u>116.85</u> Chan 115 (Y)	APCH CRS 355°	Rwy Idg 5002 TDZE 1187 Arpt Elev 1188
------------------------------------------------------------	-------------------------	------------------------------------------------------------------

[USA]

HENRY POST AAF (KFSI)

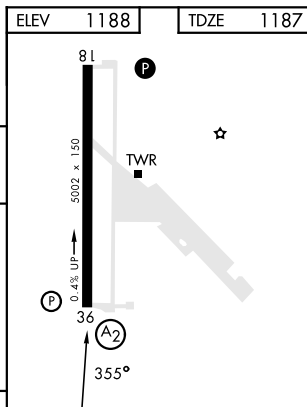
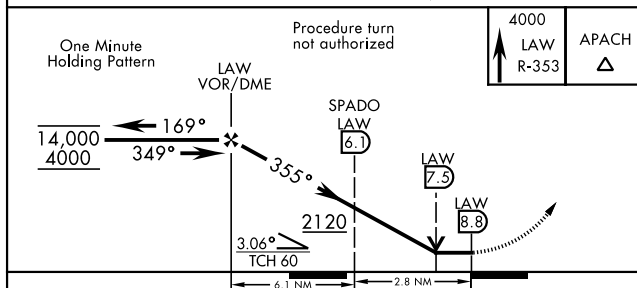
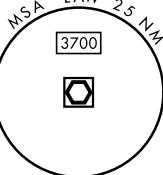
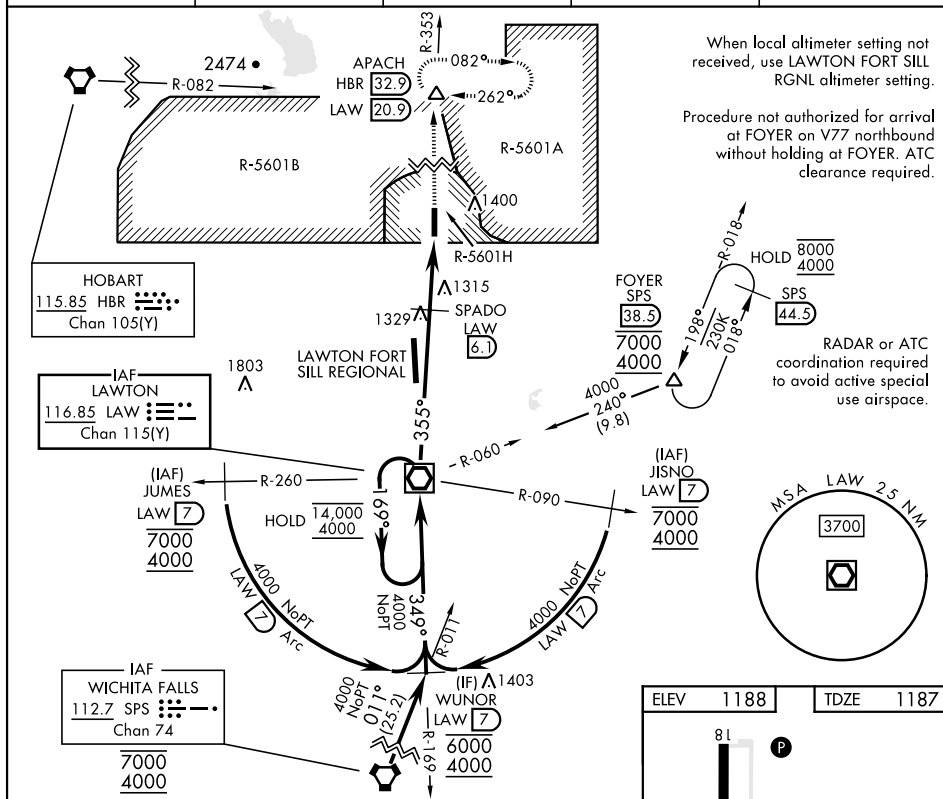
DME, RADAR required.

SALS

MISSED APPROACH: Climb to 4000 on LAW VOR/DME R-353 to APACH INT/LAW 20.9 DME and hold.

T * When ALS inop, increase CAT AB RVR to 55, vis to 1 mile; CAT CD vis to $1\frac{3}{8}$ miles.

ATIS 135.425 354.025	FORT SILL APP/DEP CON 120.55 322.4	CTAF 124.950	CLNC DEL 121.7 279.575	ASR
-------------------------	---------------------------------------	-----------------	---------------------------	-----



CATEGORY	A	B	C	D	HRL Rwy 18-36					
S-36 *	1640/40	453 (500-¾)	1640/55	453 (500-1)	FAF to MAP 8.8 NM					
CIRCLING	1680-1	1760-1	1820-1 ¾	1920-2 ¼	Knots	60	90	120	150	180
	492 (500-1)	572 (600-1)	632 (700-1 ¾)	732 (800-2 ¼)	Min:Sec	8:48	5:52	4:24	3:31	2:56

FORT SILL, OKLAHOMA

34° 39'N-98° 24'W

HENRY POST AAF (KFSI)

Amdt 16 31OCT24

VOR RWY 36

SC-1, 10 JUL 2025 to 07 AUG 2025

SC-1, 10 JUL 2025 to 07 AUG 2025