

VOR RWY 18

VOR/DME LAW <b>116.85</b> Chan <b>115</b> (Y)	APCH CRS <b>174°</b>	Rwy Idg <b>5002</b> TDZE <b>1188</b> Arpt Elev <b>1188</b>
---	-------------------------	--

[USA]

HENRY POST AAF (KFSI)

DME required

**MISSED APPROACH:** Climb straight ahead to 3000 direct to LAW VOR/DME and hold.

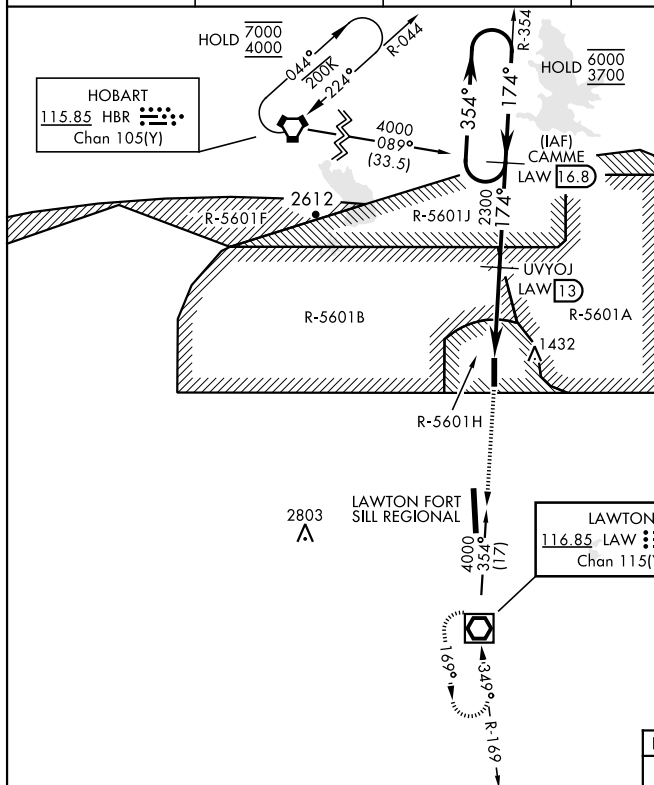
ATIS  
135.425 354.025

PORT SILL APP/DEP CON  
120.55 322.4

CTAF  
124.950

CLNC DEL  
**121.7 279.575**

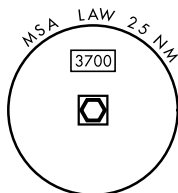
ASR



RADAR required for holding  
above 6000, or speeds  
greater than 175 KIAS.

Procedure not authorized for  
arrival on HBR VORTAC airway  
R-029 CW R-150 without holding  
at HOBART. ATC clearance required.

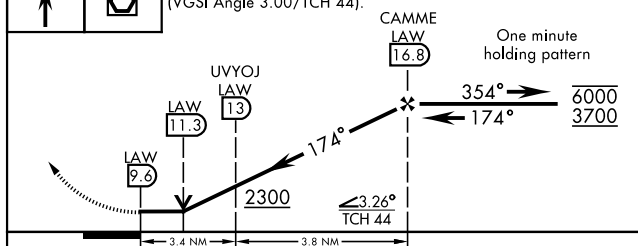
When local altimeter setting not received, use Lawton-Fort Sill RGNL altimeter setting.



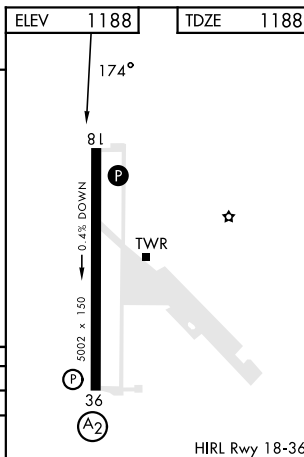
3000  
↑

LAW  


VGSI and descent angles  
not coincident  
(VGSI Angle 3.00/TCH 44).



CATEGORY	A		B		C		D	
S-18	1760/55	572	(600-1)		1760-1%	572	(600-1%)	
CIRCLING	1760-1	572	(600-1)		1820-1% 632 (700-1%)		1920-2% 732 (800-2%)	



HIRL Rwy 18-36

FORT SILL, OKLAHOMA

34° 39'N-98° 24'W

HENRY POST AAF (KFSI)

Amdt 3 31OCT24

VOR RWY 18

SC-1, 10 JUL 2025 to 07 AUG 2025

SC-1, 10 JUL 2025 to 07 AUG 2025