

WAAS CH <b>93728</b> <b>W09A</b>	APP CRS <b>090°</b>	Rwy ldg <b>5198</b> TDZE <b>428</b> Apt Elev <b>430</b>
--	------------------------	---

RNAV (GPS) RWY 9

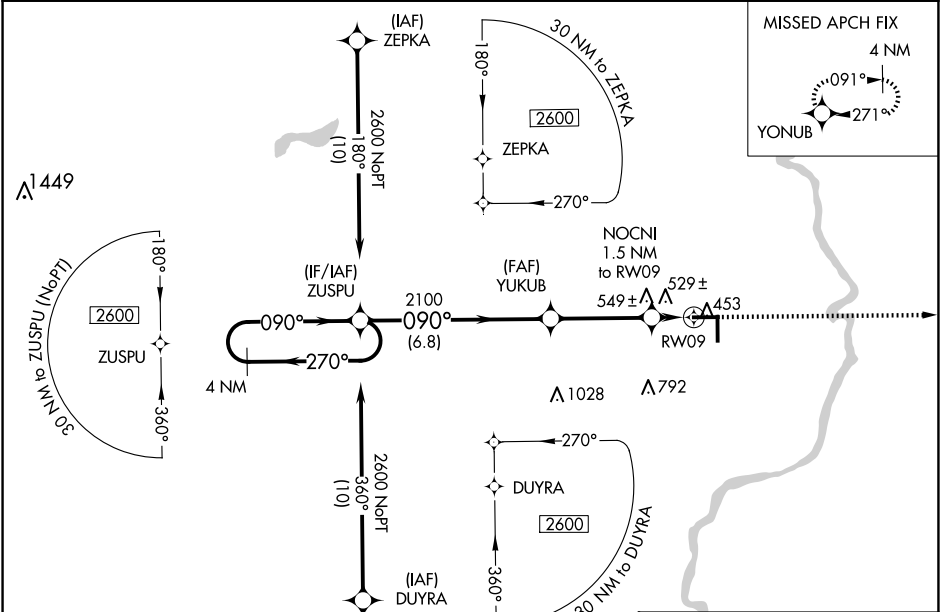
LAWRENCEVILLE-VINCENNES INTL (LWV)

⚠

Baro-VNAV NA when using Mount Carmel altimeter setting. For uncompensated Baro-VNAV systems, LNAV/VNAV NA below -15°C (5°F) or above 41°C (105°F). DME/DME RNP-0.3 NA. When local altimeter setting not received, use Mount Carmel altimeter setting: increase LPV DA to 704 feet and all visibilities ½ SM; increase LNAV/VNAV DA to 855 feet and all visibilities ½ SM; increase all MDAs 40 feet and LNAV visibility Cat C/D ½ SM, and Circling visibility Cat D ¼ SM. Circling to Rwy 36 NA at night.

MISSED APPROACH:  
Climb to 2600 direct YONUB and hold.

ASOS <b>118.0</b>	EVANSVILLE APP CON ★ <b>125.6 343.7</b>	UNICOM <b>122.8 (CTAF) 0</b>
----------------------	--	---------------------------------



<div><div><div>4 NM Holding Pattern</div><div>2600 ← 270° 090° →</div><div>GP 3.00° TCH 45</div></div><div><div>VGSI and RNAV glidepath not coincident (VGSI Angle 3.00/TCH 26).</div><div>ZUSPU</div><div>YUKUB</div><div>2100</div><div>NOCNI 1.5 NM to RW09</div><div>*LNAV only</div><div>2600</div><div>YONUB</div><div>2100</div><div>*940</div><div>RW09</div><div>6.8 NM</div><div>3.6 NM</div><div>1.5 NM</div></div></div>					<div>ELEV 430</div> <div>TDZE 428</div>
<div><div><div>090° to RW09</div><div>5198 X 100</div><div>81</div><div>5199 X 100</div><div>36</div><div>27</div><div>Ultralight Area</div></div></div>					
CATEGORY	A	B	C	D	
LPV DA	678-¾ 250 (300-¾)				
LNAV/ VNAV DA	829-1¾ 401 (400-1¾)				
LNAV MDA	820-1 392 (400-1)		820-1½ 392 (400-1½)		
CIRCLING	880-1 450 (500-1)	900-1 470 (500-1)	940-1½ 510 (600-1½)	1160-2¼ 730 (800-2¼)	
REIL Rwy 9, 27, 18 and 36 MIRL Rwy 9-27 and 18-36					