

WAAS CH 63028 W27A	APP CRS 271°	Rwy Idg TDZE 430 Apt Elev 430
--	------------------------	---

RNAV (GPS) RWY 27

LAWRENCEVILLE-VINCENNES INTL (LWV)

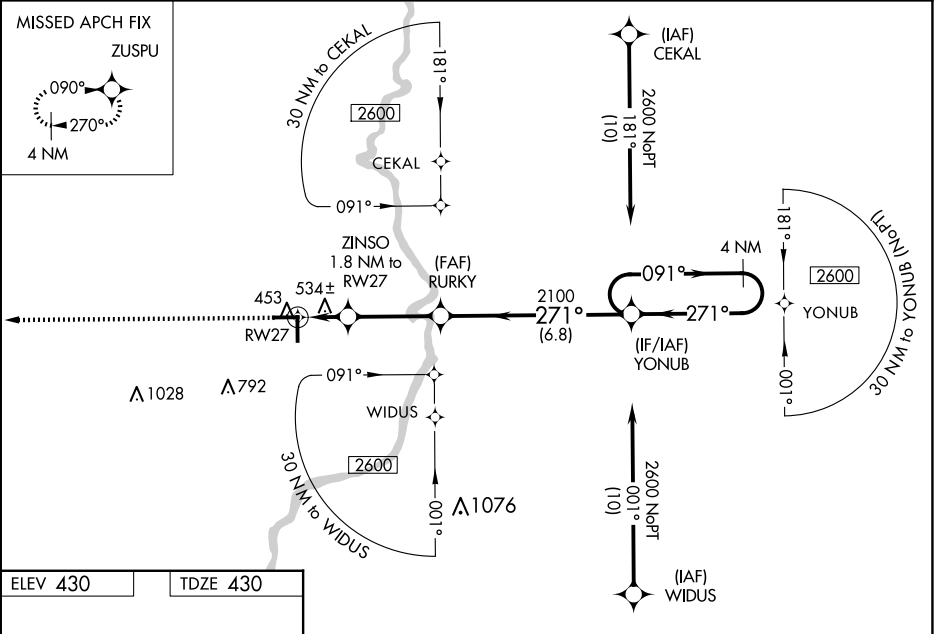
⚠ For uncompensated Baro-VNAV systems, LNAV/VNAV NA below -15°C (5°F) or above 41°C (105°F). DME/DME RNP-0.3 NA. Baro-VNAV and VDP NA when using Mount Carmel altimeter setting. When local altimeter setting not received, use Mount Carmel altimeter setting; increase LPV DA to 706 feet; increase LNAV/VNAV DA to 858 feet and all visibilities ½ SM; increase all MDAs 40 feet and Circling visibility Cat D ¼ SM. Inop table does not apply to LNAV Cat C. For inop ODALS increase LNAV/VNAV all Cats visibility to 1¾ miles. For inop ODALS when using Mount Carmel altimeter setting increase LPV all Cats visibility to ¾ mile, LNAV/VNAV all Cats visibility to 1½ miles and LNAV Cats C and D visibility to 1¾ miles. Circling to Rwy 36 NA at night.

ODALS

MISSED APPROACH:

Climb to 2600 direct ZUSPU and hold.

ASOS 118.0	EVANSVILLE APP CON ★ 125.6 343.7	UNICOM 122.8 (CTAF)
----------------------	--	-------------------------------



ELEV 430

TDZE 430

271° to RW27

5198 X 100

81

27

100 X 99.5

36

Ultralight Area

REIL Rws 9, 27, 18 and 36

MIRL Rws 9-27 and 18-36

2600

ZUSPU

2100

RURY

2600

YONUB

VGSI and RNAV glidepath not coincident (VGSI Angle 3.00°/TCH 26).

4 NM Holding Pattern

*LNAV only.

ZINSO 1.8 NM to RW27

*1.1 NM to RW27

RW27

*1040

2100

GP 3.00° TCH 45

CATEGORY	A	B	C	D
LPV DA		680-¾	250 (300-¾)	
LNAV/VNAV DA		832-1¼	402 (500-1¼)	
LNAV MDA	800-¾ 370 (400-¾)		800-1 370 (400-1)	
CIRCLING	880-1 450 (500-1)	900-1 470 (500-1)	940-1½ 510 (600-1½)	1160-2¼ 730 (800-2¼)