

APP CRS
202°

Rwy Ldg
TDZE
6867
Apt Elev
6877

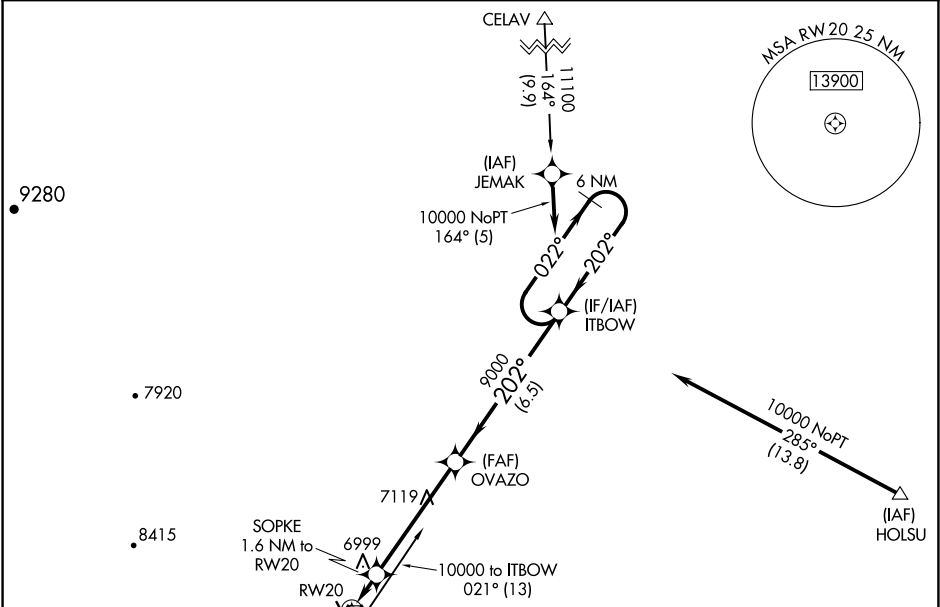
RNAV (GPS) RWY 20
LAS VEGAS MUNI (LVS)

RNP APCH-GPS.
When local altimeter setting not received, use Santa Fe Rgnl altimeter setting and increase all MDAs 200 feet; increase LNAV Cat C visibility to 1½ SM and Circling Cat C visibility to 2¼ SM. Straight-in minimums NA when using Santa Fe Muni altimeter setting.

ODALS

MISSED APPROACH: Climb to 10000 direct GAVLY and hold.

| | | |
|------------------------|---|---------------------------------|
| ASOS 118.525 | ALBUQUERQUE CENTER 132.8 346.35 | UNICOM 122.8 (CTAF) 0 |
|------------------------|---|---------------------------------|



MISSED APCH FIX GAVLY

022° 202° 6 NM

10000 GAVLY

SOPKE 1.6 NM to RW20
RW20
7400*
1.6 NM 4.9 NM 6.5 NM

OVAZO
9000
≤3.06° TCH 40

ITBOW
6 NM Holding Pattern
022° 10000
202°
*7600 when using Santa Fe Muni altimeter setting.

| | | | | |
|----------|--------------------|----------------------|---|----|
| CATEGORY | A | B | C | D |
| LNAV MDA | 7260-¾ 393 (400-¾) | | | NA |
| CIRCLING | 7420-1 543 (600-1) | 7420-1½ 543 (600-1½) | | NA |

RWY 20
0.6% UP 8179 X 75 5006 X 75 0.3% DOWN

ELEV 6877 **TDZE 6867**

MIRL Rwy 14-32 and 2-20 0