

LAS VEGAS, NEVADA

LAS VEGAS, NEVADA		21L	21R
LOC I-DIQ <u>109.1</u>	APCH CRS 209°	Rwy Idg 10,051 TDZE 1865 Arprt Elev 1869	10,120 1869

- (USAF)

NELLIS AFB (KLSV)

	DME or RADAR required.
--	------------------------

T * When ALS inop, increase RVR to 40, vis to 3/4 mile.
 ** When ALS inop, increase CAT AB RVR to 55, vis to 1 mile, CAT CDE vis to 1 3/8 miles.
 *** Circling not authorized SE of Rwy 3R-21L.

ALSF-1



MISSED APPROACH: Climb to 15,000, intercept LSV TACAN R-210 to 2.5 DME (ROCKX), then climbing right turn heading 043° to intercept LSV R-358 to ARCOE and hold, climb in hold to 15,000. Missed approach not for civil use.

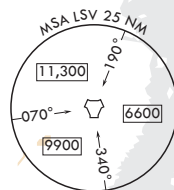
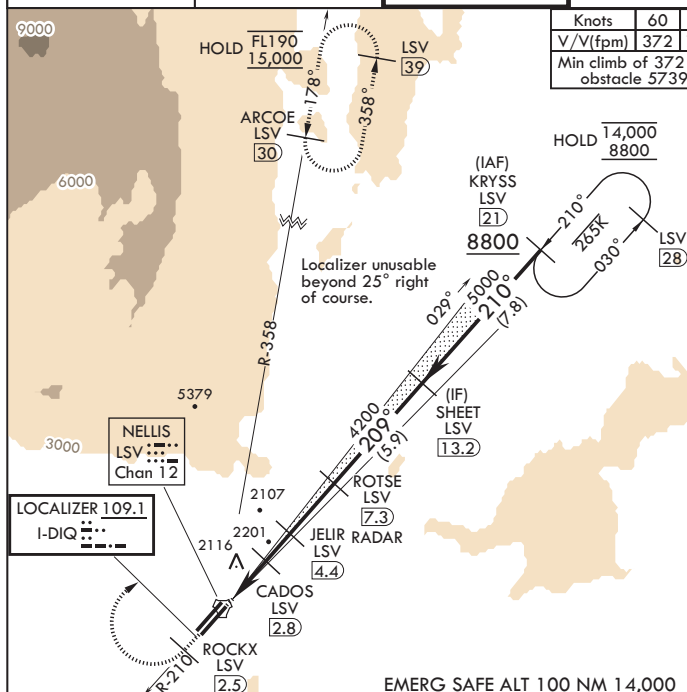
ATIS 270.1	APP CON 124.95 273.55	TOWER 132.55 327.0	GND CON 121.8 275.8	CLNC DEL★ 120.9 289.4
---------------	--------------------------	-----------------------	------------------------	--------------------------

Knots	60	120	180	240	300	360
V/V(fpm)	372	744	1116	1488	1860	2232
Min climb of 372 ft/NM to 9400 - Controlling obstacle 5739						

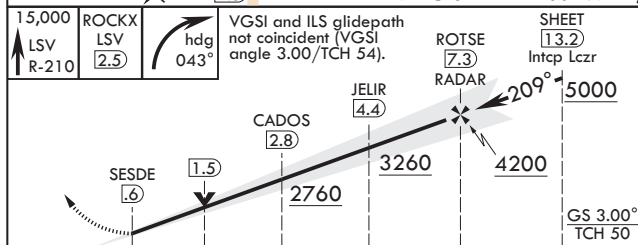
CAUTION: Missed approach
with 200 ft/NM climb
gradient not available.

MISSED APPROACH
requires use of RNAV or
ATC RADAR monitoring.

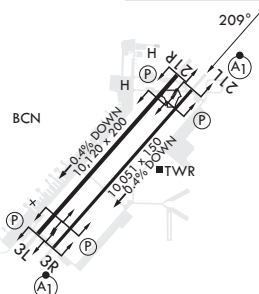
Minimum NAVAID reception
at ARCOE 15.000 MSL



EMERG SAFE ALT 100 NM 14,000



ELEV 1869	TDZE 21L 1865
	TDZE 21R 1869



	0.4	2.2 NM	1.6 NM	2.9 NM	
CATEGORY	A	B	C	D	E
S-ILS 21L*	2065/24		200	(200-½)	
S-LOC 21L**	2360/24 495 (500-½)		2360/50 495 (500-1)		
SIDESTEP 21R	2380-1 511 (600-1)		2380-1% 511 (600-1%)		
CIRCLING***	2400-1 531 (600-1)	2460-1 591 (600-1)	2560-2 691 (700-2)	2840-3 971 (1000-3)	3140-3 1271 (1300-3)

FAF to MAP 6.7 NM					
Knots	60	90	120	150	180
Min:Sec	6:42	4:28	3:21	2:41	2:14

LAS VEGAS, NEVADA

36°14'N - 115°02'W

NELLIS AFB (KLSV)

Amdt 11 10JUL25

ILS or LOC X RWY 21L

SW-4, 10 JUL 2025 to 07 AUG 2025

SW-4, 10 JUL 2025 to 07 AUG 2025