
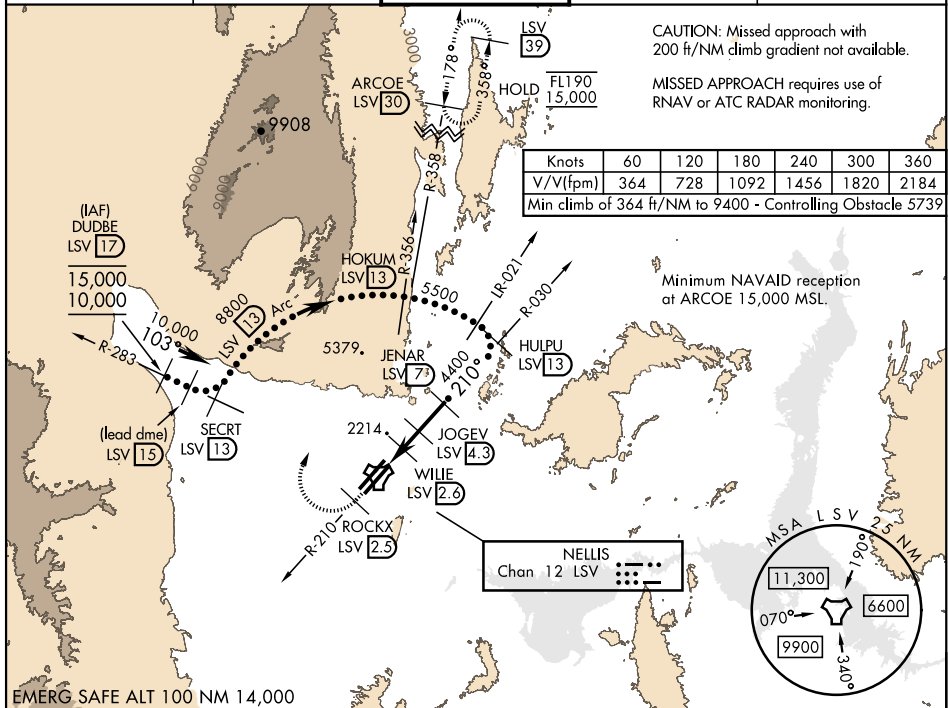


LAS VEGAS, NEVADA

TACAN Chan 12	APCH CRS 210°	Rwy Idg 21L 10,051 TDZE 1865 Arpt Elev 1869	Rwy Idg 21R 10,120 TDZE 1869	AL-227 [USAF]	NELLIS AFB (KLSV)
-------------------------	-------------------------	--	---	---------------	-------------------

<p>▼ * When ALS inop, increase CAT CDE vis to 1½ miles. ** Circling not authorized SE of Rwy 3R-21L.</p>	<p>ALSF-1</p> 	<p>MISSED APPROACH: Climb to 15,000, intercept LSV TACAN R-210 to 2.5 DME (ROCKX), then climbing right turn heading 043° to intercept LSV R-358 to ARCOE and hold, climb in hold to 15,000. Missed approach not for civil use.</p>
---	---	--

ATIS 270.1	APP CON 124.95 273.55	TOWER 132.55 327.0	GND CON 121.8 275.8	CLNC DEL 120.9 289.4
---------------	--------------------------	-----------------------	------------------------	-------------------------



15,000 ↑ LSV R-210	ROCKX LSV 2.5	hdg 043°	ARCOE R-358 30	VGSI and descent angles not coincident (VGSI Angle 3.00/TCH 54).	ELEV 1869	TDZE 21L 1865 TDZE 21R 1869
-----------------------------	---------------------	-------------	----------------------	---	-----------	--------------------------------

