

LAS VEGAS, NEVADA

LOC I-DIQ  
109.1APCH CRS  
209°

Rwy Idg	21L	21R
TDZE	10,051	10,120
Arpt Elev	1865	1869

- (USAF)

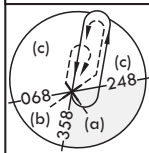
NELLIS AFB (KLSV)

DME or RADAR required.

▼ \* When ALS inop, increase RVR to 40, vis to 3/4 mile.  
\*\* When ALS inop, increase vis to 1 3/8 miles.  
\*\*\* Circling not authorized SE of Rwy 3R-21L.

Rwy 21L  
ALS-F1

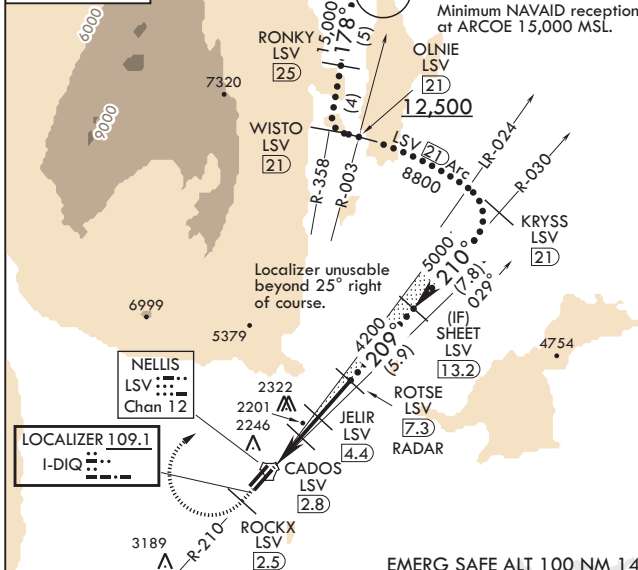
MISSED APPROACH: Climb to 15,000, intercept LSV TACAN R-210 to 2.5 DME (ROCKX), then climbing right turn heading 043° to intercept LSV R-358 to ARCOE and hold, climb in hold to 15,000. Missed approach not for civil use.

ATIS  
270.1APP CON  
124.95 273.55TOWER  
132.55 327.0GND CON  
121.8 275.8CLNC DEL★  
120.9 289.4

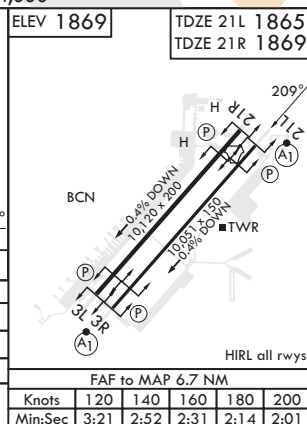
Knots	60	120	180	240	300	360
V/V(fpm)	372	744	1116	1488	1860	2232
Min climb of 372 ft/NM to 9400 - Controlling Obst 5739						

Missed Approach requires use of RNAV or ATC RADAR monitoring.

CAUTION: Missed approach with 200 ft/NM climb gradient not available.



15,000 LSV R-210	ROCKX LSV 2.5	VGSI and ILS glidepath not coincident (VGSI Angle 3.00/TCH 54).	ROTSE 7.3 RADAR	SHEET 13.2 Intcp Lczr	ELEV 1869	TDZE 21L 1865 TDZE 21R 1869
SESDE 1.6	CADOS 2.8	JELIR 4.4	ROTSE 7.3 RADAR	SHEET 13.2 Intcp Lczr	5000	
3260	2760	4200	5000	GS 3.00° TCH 50		
0.4	2.2 NM	1.6 NM	2.9 NM			
CATEGORY	C	D	E			
S-ILS 21L*	2065/24	200	(200-½)			
S-LOC 21L**	2360/50	495	(500-1)			
SIDESTEP 21R	2380-1½	511	(600-1½)			
CIRCLING***	2560-2 691 (700-2)	2840-3 971 (1000-3)	3140-3 1271 (1300-3)			
LAS VEGAS, NEVADA 36°14'N - 115°02'W						
NELLIS AFB (KLSV)						
Amdt 10 10JUL25						
HI-ILS or LOC Z RWY 21L						



SW-4, 10 JUL 2025 to 07 AUG 2025