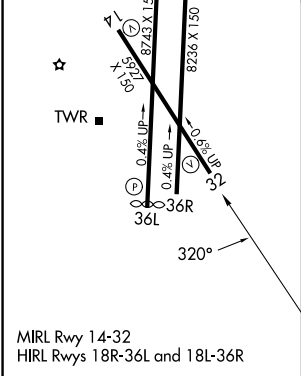
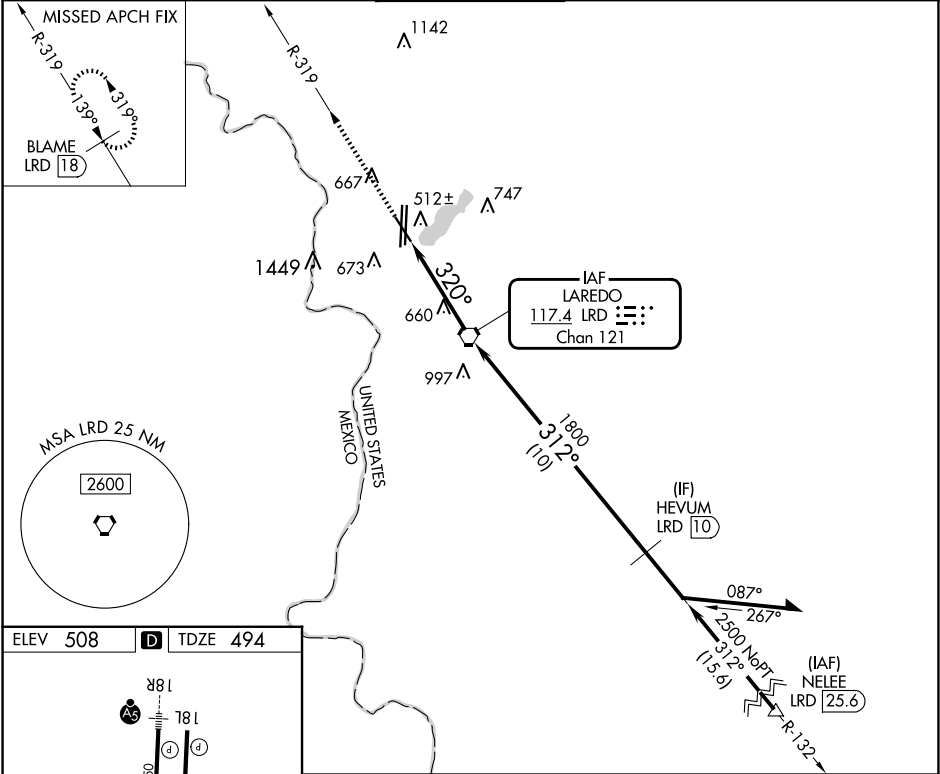


VORTAC LRD	APP CRS	Rwy Ldg
117.4	320°	5927
Chan 121		TDZE 494
		Apt Elev 508

VOR or TACAN RWY 32
LAREDO INTL (LRD)

<div><div></div><div></div></div> <div>Circling NA west of Rwy 14 and 36L. Rwy 32 helicopter visibility reduction below ¾ SM NA. DME required.</div>		MISSED APPROACH: Climb to 2600 on LRD VORTAC R-319 to BLAME/LRD 18 DME and hold.		
ATIS 125.775	HOUSTON CENTER 127.8 307.2	LAREDO TOWER ★ 120.1 (CTAF) 0 257.9	GND CON 121.8	UNICOM 122.95



ELEV 508 D TDZE 494		2600 BLAME LRD 18		LRD VORTAC		Remain within 15 NM	
R-319		LRD 2.8		3.01° TCH 55		132°	
LRD 4		320°		1800		312°	
1.2		2.8 NM		2500		VGSI and descent angles not coincident (VGSI Angle 3.00/TCH 71).	
CATEGORY	A	B	C	D	E		
S-32	920-1	426 (500-1)	920-1¼ 426 (500-1¼)				
CIRCLING	940-1 432 (500-1)	980-1 472 (500-1)	1100-1½ 592 (600-1½)	1200-2¼ 692 (700-2¼)	1200-2½ 692 (700-2½)		

SC-3, 10 JUL 2025 to 07 AUG 2025

SC-3, 10 JUL 2025 to 07 AUG 2025