

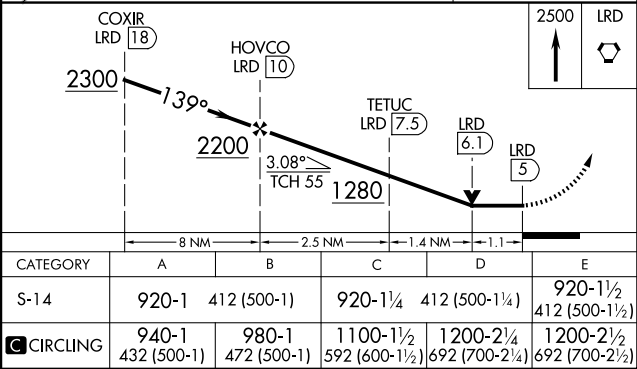
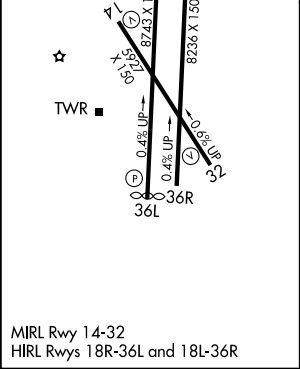
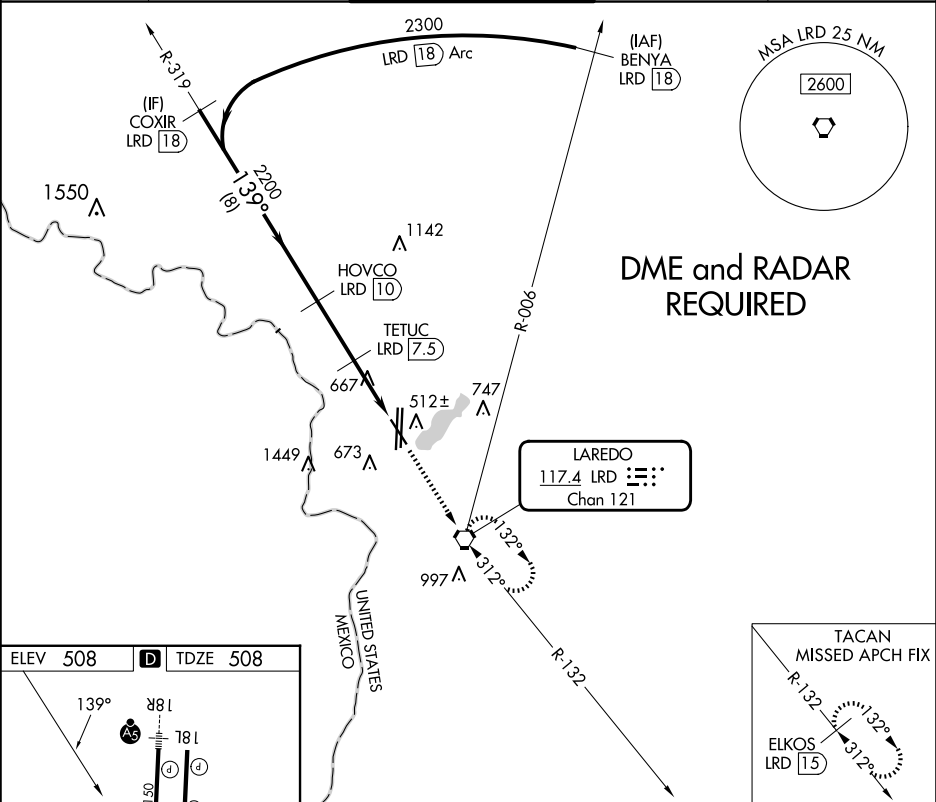
▼

▲

Circling NA west of Rwy 14 and 36L.
DME required.

MISSED APPROACH: Climb to 2500 direct LRD VORTAC and hold,
continue climb-in-hold to 2500 (TACAN aircraft continue on LRD VORTAC
R-132 to ELKOS/15 DME and hold SE, right turn, 312° inbound).

ATIS	HOUSTON CENTER	LAREDO TOWER ★	GND CON	UNICOM
125.775	127.8 307.2	120.1 (CTAF) 0 257.9	121.8	122.95



SC-3, 10 JUL 2025 to 07 AUG 2025

SC-3, 10 JUL 2025 to 07 AUG 2025