

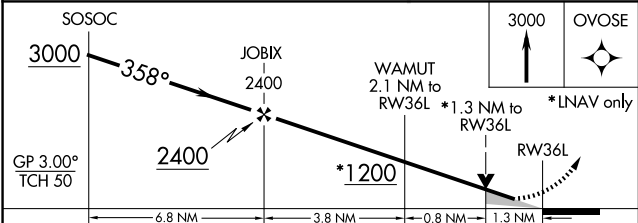
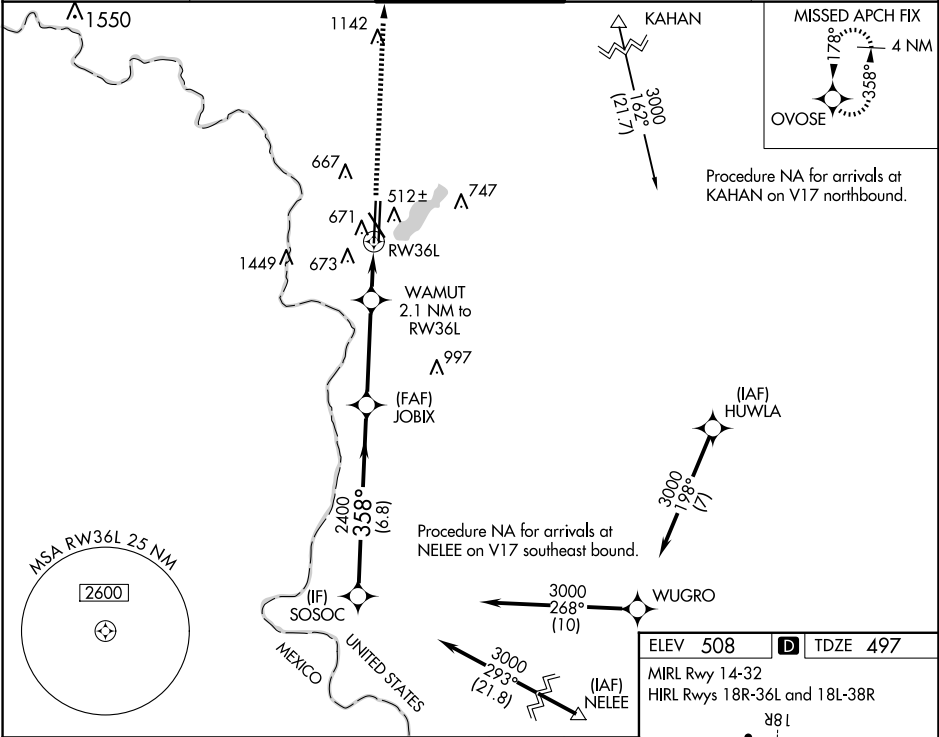
WAAS CH <b>77933</b> <b>W36A</b>	APP CRS <b>358°</b>	Rwy Ldg <b>8623</b> TDZE <b>497</b> Apt Elev <b>508</b>
--	------------------------	---

RNAV (GPS) RWY 36L  
LAREDO INTL (L.R.D)

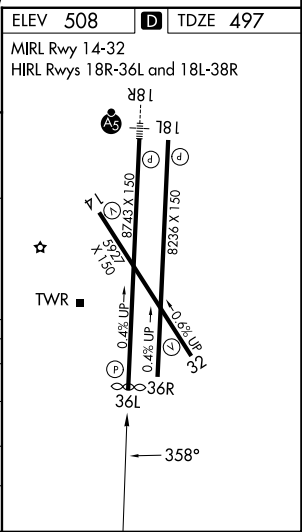
**▽** For uncompensated Baro-VNAV systems, LNAV/VNAV NA below 1°C (34°F) or above 54°C (130°F). Circling NA west of Rwy 14 and 36L. DME/DME RNP-0.3 NA.

**▲** MISSED APPROACH: Climb to 3000 direct OVOSE and hold.

ATIS <b>125.775</b>	HOUSTON CENTER <b>127.8 307.2</b>	LAREDO TOWER ★ <b>120.1(CTAF) 257.9</b>	GND CON <b>121.8</b>	UNICOM <b>122.95</b>
------------------------	--------------------------------------	--	-------------------------	-------------------------



CATEGORY	A	B	C	D	E
LPV DA		697-3/4	200 (200-3/4)		
LNAV/VNAV DA		844-1	347 (400-1)		
LNAV MDA	940-1	443 (500-1)	940-1 3/8	443 (500-1 3/8)	
CIRCLING	940-1 432 (500-1)	980-1 472 (500-1)	1100-1 1/2 592 (600-1 1/2)	1200-2 1/4 692 (700-2 1/4)	1200-2 1/2 692 (700-2 1/2)



SC-3, 10 JUL 2025 to 07 AUG 2025

SC-3, 10 JUL 2025 to 07 AUG 2025