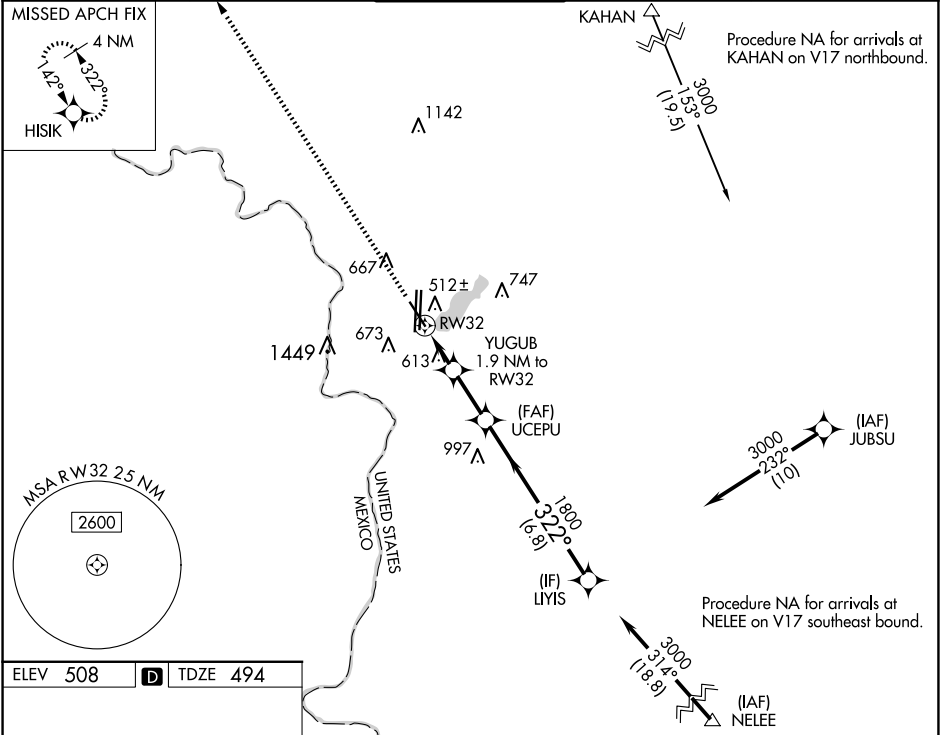


WAAS CH <b>86633</b> <b>W32A</b>	APP CRS <b>322°</b>	Rwy Ldg TDZE <b>494</b> Apt Elev <b>508</b>
--	------------------------	---

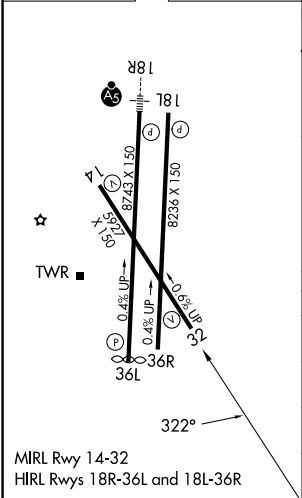
RNAV (GPS) RWY 32  
LAREDO INTL (L.R.D)

<p><b>⚠</b> For uncompensated Baro-VNAV systems, LNAV/VNAV NA below 1°C (34°F) or above 54°C (130°F). Circling NA west of Rwy 14 and 36L. Rwy 32 helicopter visibility reduction below ¾ SM NA. DME/DME RNP-0.3 NA.</p>	<p>MISSED APPROACH: Climb to 3000 direct HISIK and hold.</p>
---	--

ATIS <b>125.775</b>	HOUSTON CENTER <b>127.8 307.2</b>	LAREDO TOWER ★ <b>120.1</b> (CTAF) <b>257.9</b>	GND CON <b>121.8</b>	UNICOM <b>122.95</b>
------------------------	--------------------------------------	--	-------------------------	-------------------------



ELEV <b>508</b>	<b>D</b>	TDZE <b>494</b>
-----------------	----------	-----------------



<div>3000</div> <div>HISIK</div> <div><div><div></div><div></div></div><div><div></div><div></div></div></div> <div>* LNAV only</div>		VGSI and RNAV glidepath not coincident (VGSI Angle 3.00/TCH 71).				<div>LYIS</div> <div>3000</div> <div>GP 3.00° TCH 50</div>	
<div><div><div></div><div></div></div><div><div></div><div></div></div></div> <div>RW32</div> <div><div><div></div><div></div></div><div><div></div><div></div></div></div> <div>* 1.1 NM to RW32</div> <div>YUGUB 1.9 NM to RW32</div> <div>UCEPU 1800</div> <div><div><div></div><div></div></div><div><div></div><div></div></div></div> <div>322°</div> <div>1800</div> <div>* 1120</div> <div><div><div></div><div></div></div><div><div></div><div></div></div></div> <div>1.1 NM</div> <div>0.8 NM</div> <div>2.1 NM</div> <div>6.8 NM</div>							
CATEGORY	A	B	C	D	E		
LPV DA	744-¾		250 (300-¾)				
LNAV/VNAV DA	826-1		332 (400-1)				
LNAV MDA	880-1 386 (400-1)		880-1½ 386 (400-1½)				
<div><div></div><div>CIRCLING</div></div>	940-1 432 (500-1)	980-1 472 (500-1)	1100-1½ 592 (600-1½)	1200-2¼ 692 (700-2¼)	1200-2½ 692 (700-2½)		