

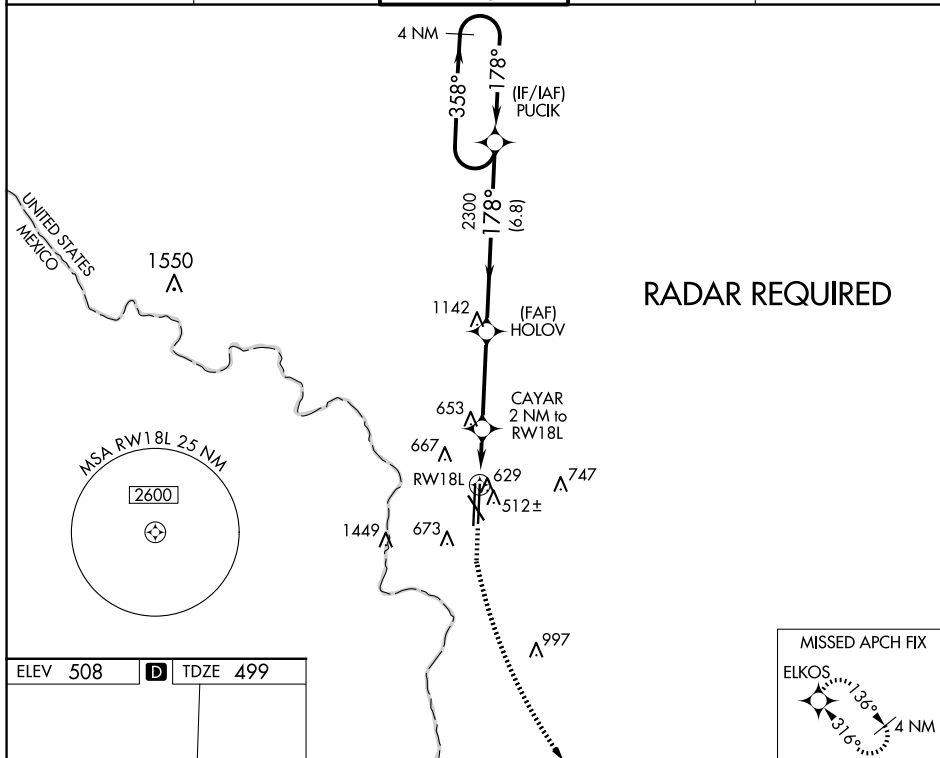
WAAS Ch 77899 W18B	APP CRS 178°	Rwy Ldg 8236 TDZE 499 Apt Elev 508
--	------------------------	---

RNAV (GPS) RWY 18L
LAREDO INTL (LRD)

T For uncompensated Baro-VNAV systems, LNAV/VNAV NA below
A 1°C (34°F) or above 54°C (130°F).
Circling NA west of Rwy 14 and 36L. DME/DME RNP-0.3 NA.

MISSED APPROACH: Climb to 1000 then climbing left turn to 2500 direct ELKOS and hold.

ATIS 125.775	HOUSTON CENTER 127.8 307.2	LAREDO TOWER ★ 120.1(CTAF) 0 257.9	GND CON 121.8	UNICOM 122.95
-----------------	-------------------------------	---------------------------------------	------------------	------------------

[illegible]