

LOC/DME I-LRD 111.9 Chan 56	APP CRS 178°	Rwy Ldg TDZE Apt Elev	18R 8743 504 508	18L 8236 499 508
---	------------------------	-----------------------------	--	--

ILS or LOC RWY 18R
LAREDO INTL (LRD)

DME required.

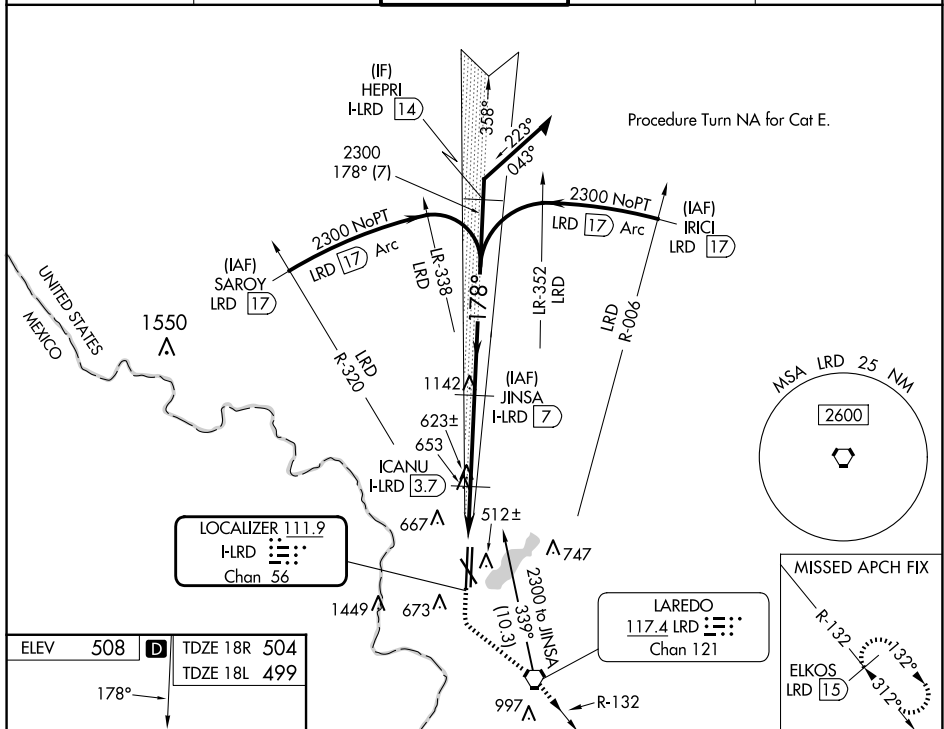
T Circling NA southwest of Rwy 14 and west of Rwy 36L.
A For inop ALS, increase S-ILS 18R Cat E visibility to $\frac{3}{4}$ SM and increase S-LOC 18R Cat C, D, and E visibility to $\frac{1}{2}$ SM.

MALSR

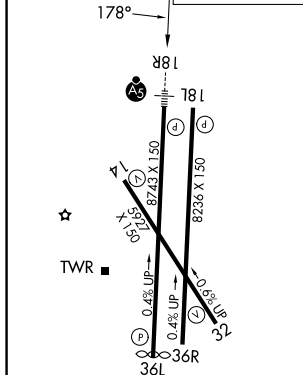



MISSED APPROACH: Climb to 1100 then climbing left turn to 2500 direct LRD VORTAC and on LRD VORTAC R-132 to ELKOS/LRD 15 DME and hold.

ATIS 125.775	HOUSTON CENTER 127.8 307.2	LAREDO TOWER ★ 120.1 (CTAF) 0 257.9	GND CON 121.8	UNICOM 122.95
-----------------	-------------------------------	--	------------------	------------------



ELEV	508	D	TDZE 18R	504
			TDZE 18L	499



CATEGORY	A	B	C	D	E
S-ILS 18R	704- $\frac{1}{2}$ 200 (200- $\frac{1}{2}$)				
S-LOC 18R	920- $\frac{1}{2}$ 416 (500- $\frac{1}{2}$)	920- $\frac{3}{4}$ 416 (500- $\frac{3}{4}$)			
SIDESTEP 18L	920-1 421 (500-1)	920-1 $\frac{1}{2}$ 421 (500-1 $\frac{1}{2}$)		920-2 421 (500-2)	
 CIRCLING	940-1 432 (500-1)	980-1 472 (500-1)	1100-1 $\frac{1}{2}$ 592 (600-1 $\frac{1}{2}$)	1200-2 $\frac{1}{4}$ 692 (700-2 $\frac{1}{4}$)	1200-2 $\frac{1}{2}$ 692 (700-2 $\frac{1}{2}$)