

TACAN RWY 24

LAKEHURST MAXFIELD FLD,
(JOINT BASE MC GUIRE DIX LAKEHURST) (KNEL)

TACAN NEL Chan 55	APCH CRS 250°	Rwy Idg 5002 TDZE 101 Arpt Elev 101
----------------------	------------------	--

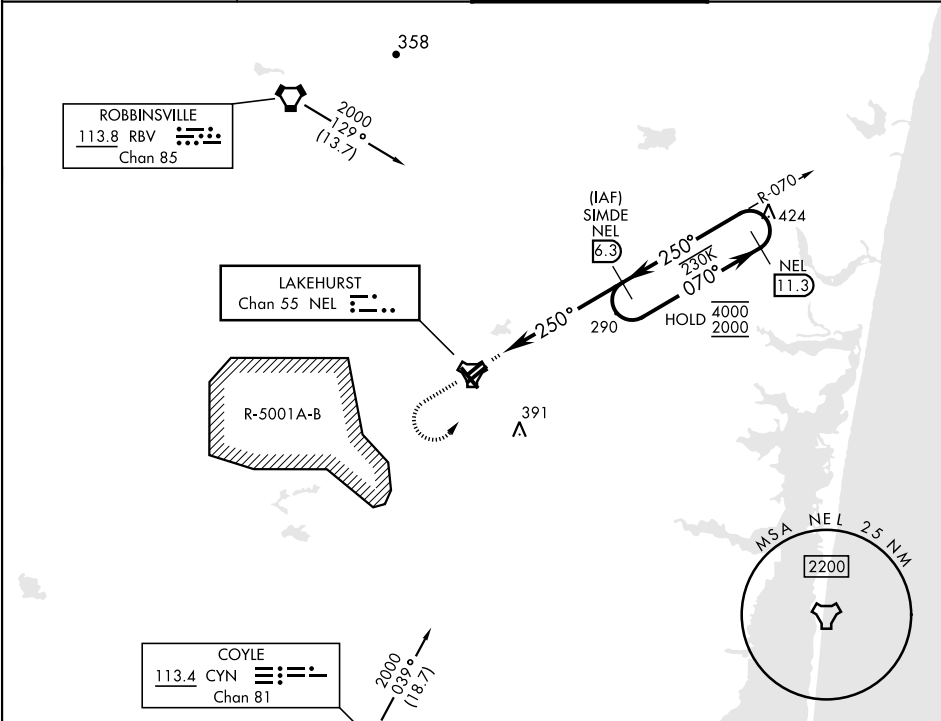
AL-223 [USN]

MISSED APPROACH: Climb to 700, then climbing left turn to 2000 to intercept NEL TACAN R-070 and hold.

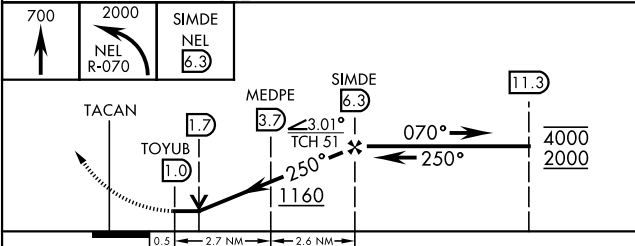
When ALS inop increase CAT AB vis to 1 mile, CAT CD vis to 1½ miles.



ATIS ★ 276.525	MC GUIRE APP CON 126.475 363.8	TOWER ★ 127.775 360.2	GND CON 118.375 307.375
-------------------	-----------------------------------	--------------------------	----------------------------



EMERG SAFE ALT 100 NM 4100



CATEGORY	A	B	C	D
S-24 *	540-½ 439 (500-½)	540-¾ 439 (500-¾)		
CIRCLING	660-1 559 (600-1)	720-1 619 (700-1)	720-1¾ 619 (700-1¾)	720-2 619 (700-2)

ELEV	101	TDZE	101
------	-----	------	-----

