

WAAS CH 97613 W08A	APP CRS 081°	Rwy Idg 6849 TDZE 4229 Apt Elev 4229
--	------------------------	---

RNAV (GPS) RWY 8

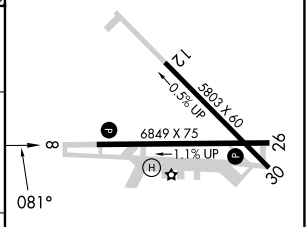
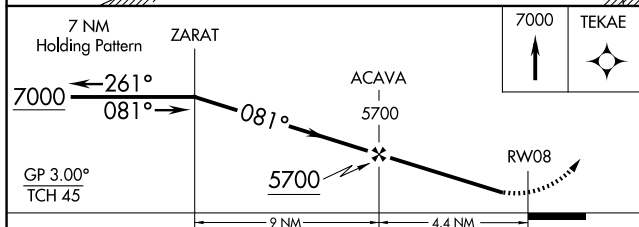
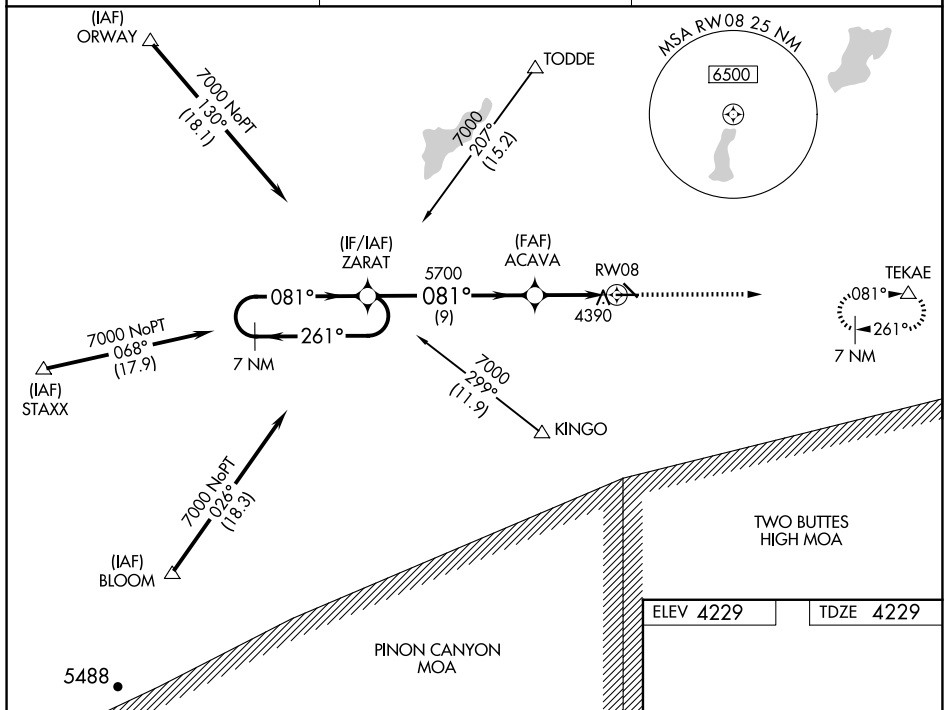
LA JUNTA MUNI (LHX)

RNP APCH - GPS.

⚠ Baro-VNAV NA when using Lamar altimeter setting. For uncompensated Baro-VNAV systems, LNAV/VNAV NA below -23°C or above 40°C. When local altimeter setting not received, use Lamar altimeter setting: increase LPV DA to 4694 feet and all visibilities $\frac{1}{2}$ SM; increase LNAV/VNAV DA to 4904 feet and all visibilities $\frac{1}{2}$ SM; increase all MDAs 180 feet and visibility LNAV Cats C and D $\frac{1}{2}$ SM and Circling Cat C $\frac{1}{2}$ SM and Cat D $\frac{3}{4}$ SM. Circling Rwy 12, 30 NA at night.

MISSED APPROACH:
Climb to 7000 direct
TEKAE and hold.

ASOS 135.525	DENVER CENTER 128.375 379.95	UNICOM 123.0 (CTAF) 0
------------------------	--	---------------------------------



CATEGORY	A	B	C	D
LPV DA	4528-7 ₈		299 (300-7 ₈)	
RNAV/ VNAV DA	4738-13 ₈		509 (600-13 ₈)	
RNAV MDA	4700-1 471 (500-1)		4700-13 ₈	471 (500-13 ₈)
CIRCLING	4740-1 511 (600-1)		4740-11 ₂ 511 (600-11 ₂)	4860-2 631 (700-2)

REIL Rwy 8 and 26 **L**
MIRL Rwy 8-26 **L**