

WAAS CH <b>93813</b> <b>W26A</b>	APP CRS <b>261°</b>	Rwy Idg <b>6849</b> TDZE <b>4188</b> Apt Elev <b>4229</b>
--	------------------------	---

## RNAV (GPS) RWY 26

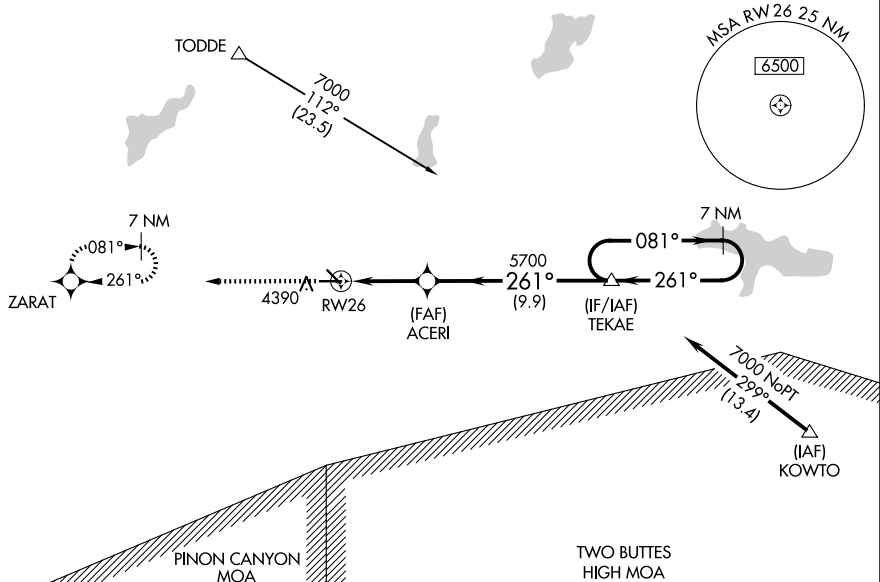
LA JUNTA MUNI (LHX)

RNP APCH - GPS.

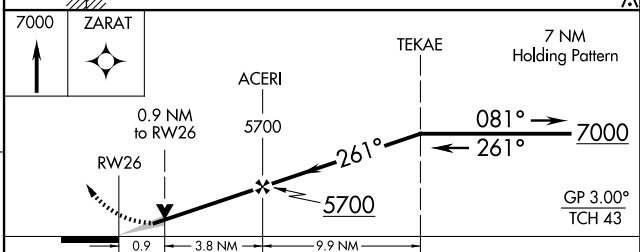
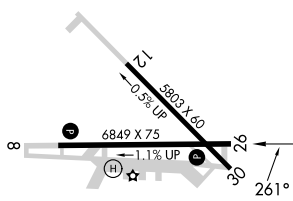
**T** For uncompensated Baro-VNAV systems, LNAV/VNAV NA below -23°C or above 40°C. Baro-VNAV and VDP NA when using Lamar altimeter setting. When local altimeter setting not received, use Lamar altimeter setting: increase LPV and LNAV/VNAV DAs to 4604 feet and all visibilities  $\frac{3}{8}$  SM; increase all MDAs 180 feet and visibility LNAV Cats C and D  $\frac{1}{2}$  SM and Circling Cat C  $\frac{1}{2}$  SM and Cat D  $\frac{3}{4}$  SM. Circling Rwy 12, 30 NA at night.

**MISSED APPROACH:**  
Climb to 7000 direct  
ZARAT and hold.

ASOS <b>135.525</b>	DENVER CENTER <b>128.375 379.95</b>	UNICOM <b>123.0 (CTAF) 0</b>
------------------------	--	---------------------------------



ELEV 4229		TDZE 4188
-----------	--	-----------



CATEGORY	A	B	C	D
LPV DA	4438-¾		250 (300-¾)	
INAV/ VNAV DA	4438-¾		250 (300-¾)	
INAV MDA	4480-1	292 (300-1)	4480-7/8	292 (300-7/8)
CIRCLING	4740-1	511 (600-1)	4740-1½ 511 (600-1½)	4860-2 631 (700-2)

LA JUNTA, COLORADO

Amdt 1B 06OCT22

LA JUNTA MUNI (LHX)

RNAV (GPS) RWY 26

38°03'N-103°31'W

SW-1, 10 JUL 2025 to 07 AUG 2025

SW-1, 10 JUL 2025 to 07 AUG 2025