

VORTAC BVT

115.1

Chan 98

APP CRS

143°

Rwy Idg

TDZE

Apt Elev

N/A

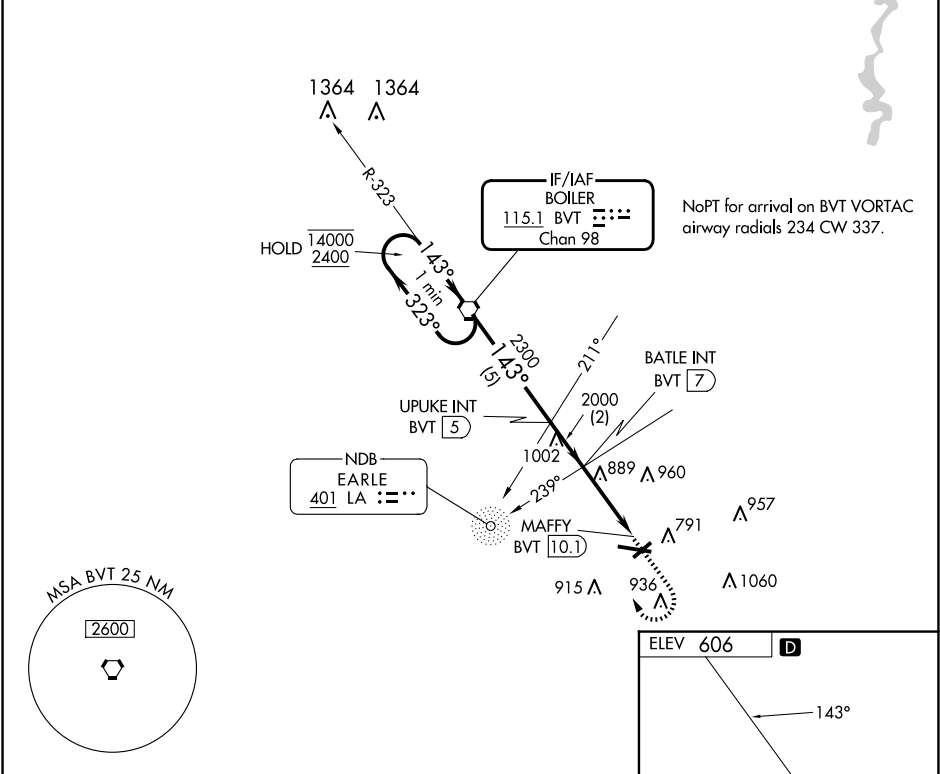
N/A

606

VOR-A

PURDUE UNIVERSITY (LAF)

ADF or DME required.		MISSED APPROACH: Climb to 2300 then climbing right turn to 2400 direct BVT VORTAC and hold.		
<div><div>▼</div><div>▲</div></div> <div>Circling Rwy 23 NA at night. When local altimeter setting not received, use Vermilion Rgnl altimeter setting and increase all MDAs 100 feet and Cat C and D visibility ½ SM.</div>				
ATIS 127.75	GRISOM APP CON ★ 123.85 291.675	LAFAYETTE TOWER ★ 119.6 (CTAF) 0 343.625	GND CON 121.9 343.625	UNICOM 122.95



One Minute Holding Pattern		BVT VORTAC		2300 2400 BVT	
14000 2400		←323° 143°→		UPUKE INT BVT [5] BATLE INT BVT [7] MAFFY BVT [10.1]	
		2300 2000		5 NM 2 NM 3.1 NM	
CATEGORY	A	B	C	D	FAF to MAP 3.1 NM
CIRCLING	1160-1	554 (600-1)	1320-2 714 (800-2)	1420-2¾ 814 (900-2¾)	Knots 60 90 120 150 180 Min:Sec 3:06 2:04 1:33 1:14 1:02