

WAAS Ch 45902 W10A	APP CRS 100°	Rwy Idg TDZE Apt Elev	6600 601 606
--	------------------------	-----------------------------	---

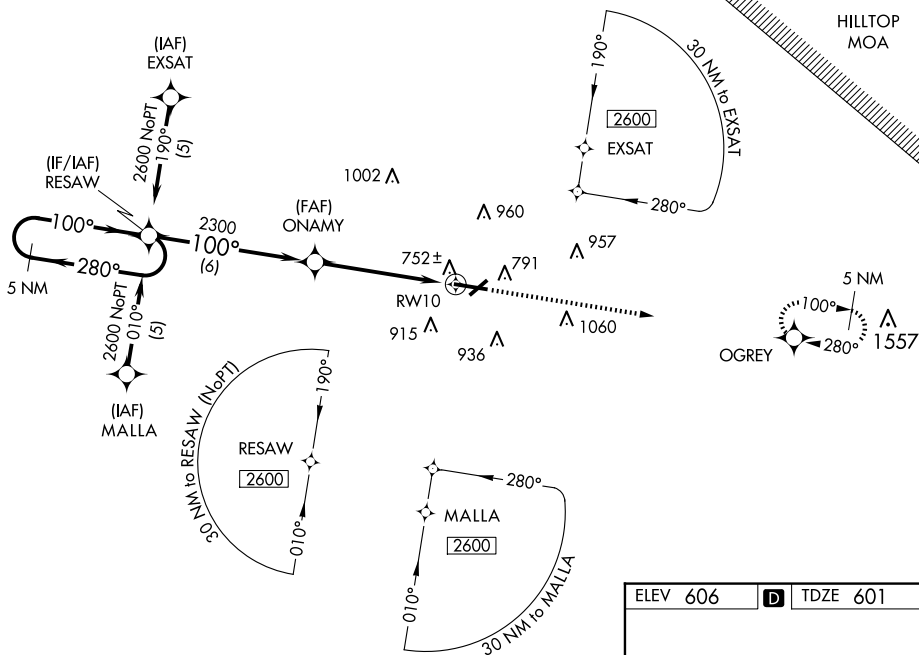
RNAV (GPS) RWY 10
PURDUE UNIVERSITY (LAF)

When local altimeter setting not received, use Vermilion Rgnl altimeter setting and increase LPV DA to 966 feet and visibility all Cats $\frac{1}{2}$ SM; increase LNAV/VNAV DA to 1172 feet; increase all MDAs 100 feet and LNAV Cats C/D visibility $\frac{1}{4}$ SM, increase Circling Cat C visibility $\frac{1}{2}$ SM and Cat D visibility $\frac{1}{4}$ SM. Baro-VNAV NA when using Vermilion Rgnl altimeter setting. VDP NA when using Vermilion Rgnl altimeter setting. For uncompensated Baro-VNAV systems, LNAV/VNAV NA below -16°C (4°F) or above 47°C (116°F). For inoperative MALSR, increase LPV all Cats visibility to 1 mile. DME/DME RNP-0.3 NA. Circling RWY 23 NA at night.

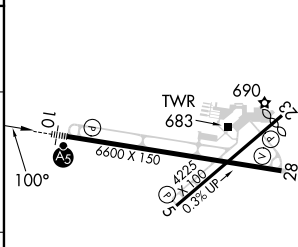
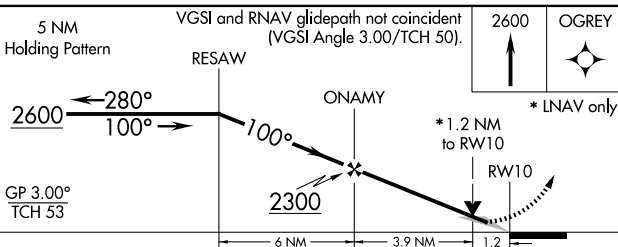


MISSED APPROACH:
Climb to 2600 direct
OGREY and hold.

ATIS 127.75	GRISCOM APP CON★ 123.85 291.675	LAFAYETTE TOWER ★ 119.6 (CTAF) 0 343.625	GND CON 121.9 343.625	UNICOM 122.95
-----------------------	---	--	---------------------------------	-------------------------



ELEV 606		TDZE 601
----------	---	----------



CATEGORY	A	B	C	D
LPV DA	877-1½ 276 (300-½)			
LNAV/ VNAV DA	1083-1¼ 482 (500-1¼)			
LNAV MDA	1040-½ 439 (500-½)		1040-¾ 439 (500-¾)	1040-1 439 (500-1)
CIRCLING	1160-1 554 (600-1)		1320-2 714 (800-2)	1420-2¾ 814 (900-2¾)

HIRL Rwy 10-28 **L**
REIL Rwys 5, 23 and 28 **L**
MIRL Rwy 5-23 **L**