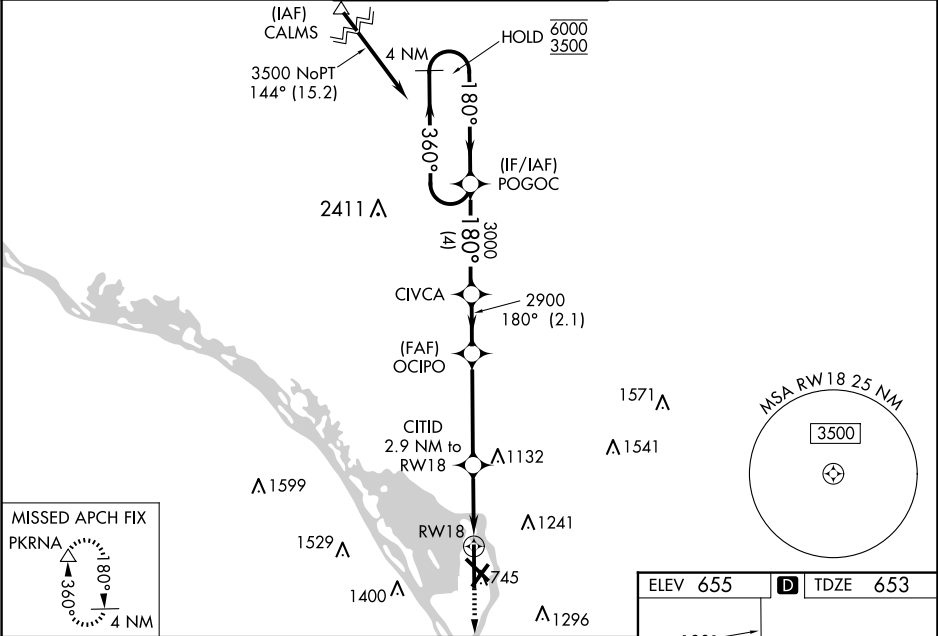


WAAS CH 72809 W18A	APP CRS 180°	Rwy Idg TDZE 653 Apt Elev 655
--	------------------------	---

RNAV (GPS) RWY 18

LA CROSSE RGNL (LSE')

RNP APCH - GPS.			MALSR	MISSED APPROACH: Climb to 3000 direct PKRNA and hold.
For uncompensated Baro-VNAV systems, LNAV/VNAV NA below -19°C or above 54°C. When local altimeter setting not received, use ONA altimeter setting and increase LPV DA to 907 feet; increase LNAV/VNAV DA to 1174 feet; increase all MDAs 60 feet and Circling visibility Cat B ¼ SM. For inop ALS, increase LNAV/VNAV all Cats visibility to 1 ½ SM, and LNAV Cats C and D to 1 ¾ SM. Baro-VNAV and VDP NA when using ONA altimeter setting.				
ATIS 124.95	MINNEAPOLIS CENTER 128.6 363.0	LA CROSSE TOWER★ 118.45 (CTAF) 251.075	GND CON 121.8	UNICOM 122.95



4 NM Holding Pattern		POGOC	CIVCA	OCIPO	CITID	RW18
6000 ← 360°		3000	2900	2900	1620	
3500 → 180°						
GP 3.00° TCH 55						
4 NM		2.1 NM	4 NM	1.6 NM	1.3 NM	
CATEGORY	A	B	C	D		
LPV DA	853-½		200 (200-½)			
LNAV/VNAV DA	1120-1		467 (500-1)			
LNAV MDA	1120-½		467 (500-½)			
CIRCLING	1140-1 485 (500-1)		1460-1 805 (900-1)			
			1760-3 1105 (1200-3)			
			1820-3 1165 (1200-3)			

