

⚠

⚠

MISSED APPROACH: Climb to 3000 via VVX R-231 to GROSS INT/29.1 DME and hold.

ATIS

128.35

KNOXVILLE APP CON

123.9 360.8

KNOXVILLE TOWER

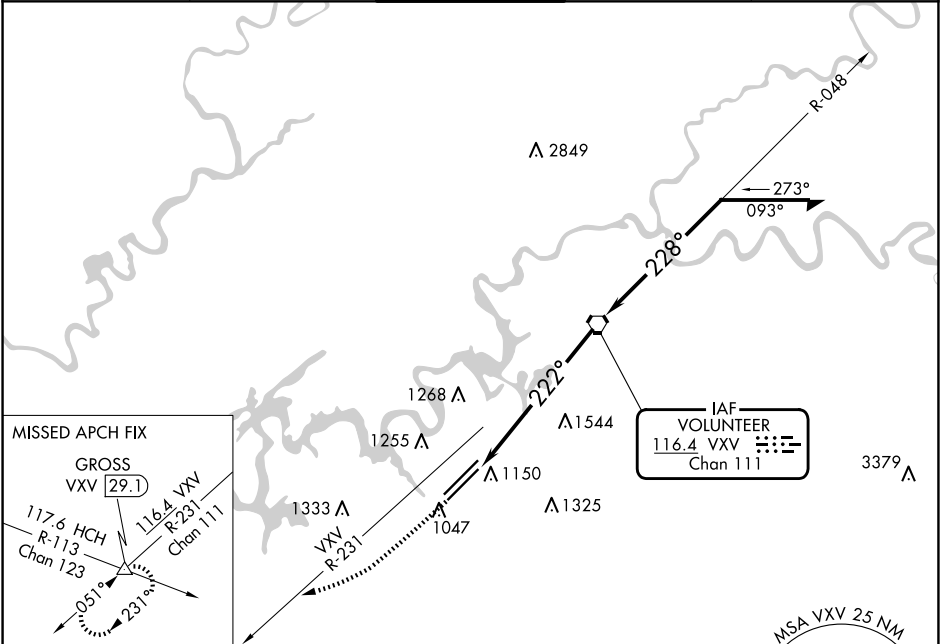
121.2 257.8

GND CON

121.9 348.6

CLNC DEL

121.65



ELEV 986

D

TDZE 965

TWR 1094

222°

23L

23R

1000X150

0.8%

1000X150

0.8%

500X150

0.5%

500X150

0.5%

HIRL Rwy 5L-23R and 5R-23L

REIL Rwy 5R and 23L

TDZ/CL Rwy 5R and 23R

FAF to MAP 6.8 NM

Knots

60

90

120

150

180

Min:Sec

6:48

4:32

3:24

2:43

2:16

3000

GROSS

△

VVX R-231

VVX VORTAC

Remain within 10 NM

048°

228°

3100

2.88°

TCH 50

1.8

5 NM

| CATEGORY | A                  | B                  | C                  | D                   |
|----------|--------------------|--------------------|--------------------|---------------------|
| S-23L    | 1600-1 635 (700-1) | 1600-1 635 (700-1) | 1600-1 635 (700-1) | 1600-2 635 (700-2)  |
| CIRCLING | 1600-1 614 (700-1) | 1620-1 634 (700-1) | 1660-2 674 (700-2) | 1900-3 914 (1000-3) |