

WAAS CH <b>81902</b> <b>W23A</b>	APP CRS <b>231°</b>	Rwy Idg TDZE <b>984</b> Apt Elev <b>986</b>
--	------------------------	---

RNAV (GPS) RWY 23R

MC GHEE TYSON (T'YS)

RNP APCH - GPS.

▼

▲

For uncompensated Baro-VNAV systems, LNAV/VNAV NA below -10°C or above 54°C. For inop ALS, increase LNAV Cat C/D visibility to 1½ SM.

ALSF-2

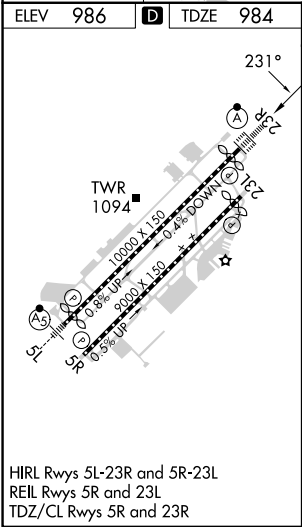
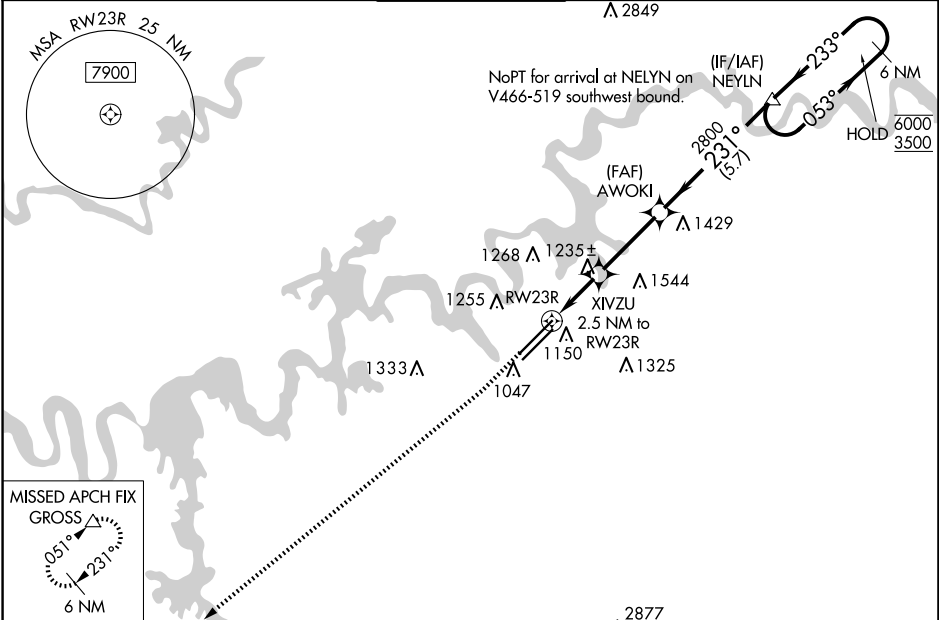
⬆

⬆

⬆

MISSED APPROACH: Climb to 1600 then climb to 3000 direct GROSS and hold.

ATIS <b>128.35</b>	KNOXVILLE APP CON <b>123.9 360.8</b>	KNOXVILLE TOWER <b>121.2 257.8</b>	GND CON <b>121.9 348.6</b>	CLNC DEL <b>121.65</b>
-----------------------	---	---------------------------------------	-------------------------------	---------------------------



ELEV	986	D	TDZE	984
1600	3000	GROSS		
AWOKI	2800	NEYNL	Holding Pattern	
XIVZU	2.5 NM to RW23R			
1.4 NM to RW23R				
RW23R				
1.4	1.1	3.1 NM	5.7 NM	
CATEGORY	A	B	C	D
LPV DA	1184/18	200 (200-½)		
LNAV/VNAV DA	1529-1½	545 (600-1½)		
LNAV MDA	1500/24	516 (600-½)	1500/55	516 (600-1)
CIRCLING	1500-1 514 (600-1)	1560-1 574 (700-1)	1660-2 674 (700-2)	1900-3 914 (1000-3)

SE-1, 10 JUL 2025 to 07 AUG 2025

SE-1, 10 JUL 2025 to 07 AUG 2025