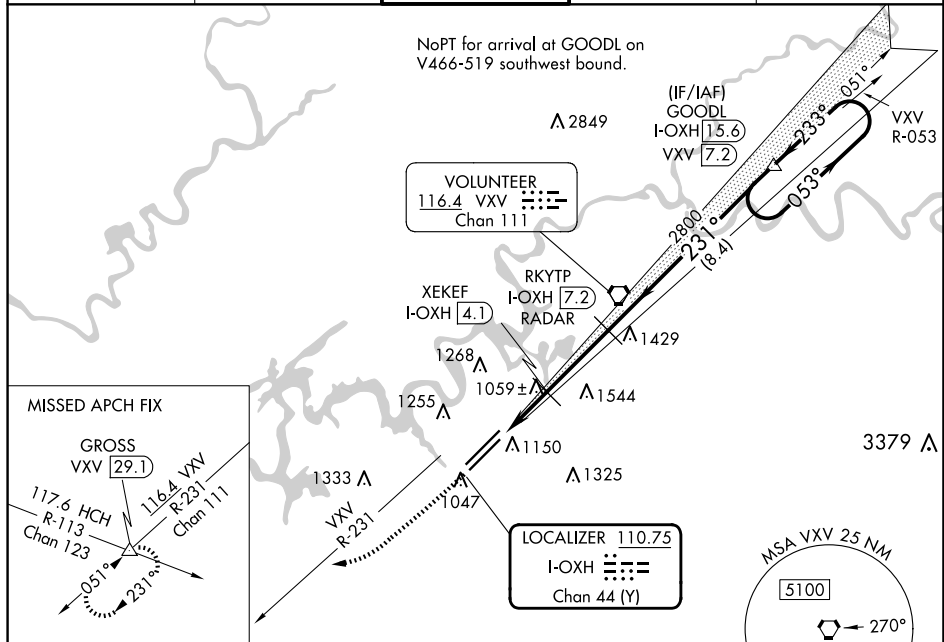


24249

ILS or LOC RWY 23L
MC GHEE TYSON (TYS)

MISSED APPROACH: Climb to 2000 then climbing right turn to 4000 on heading 240° and VXX VORTAC R-231 to GROSS INT/VXX 29.1 DME and hold.



<div><div>2000</div><div>↑</div></div>		<div><div>4000</div><div>hdg 240°</div></div>	<div><div>VXV</div><div>R-231</div></div>	<div><div>GROSS</div><div>△</div></div>	Disregard all marker beacon indications.				
				<div><div>GOODL</div><div>I-OXH <u>15.6</u></div></div>		One Minute Holding Pattern			
				<div><div>RKYTP</div><div>I-OXH <u>7.2</u></div></div>					
				<div><div>XEKEF</div><div>RADAR</div></div>					
				<div><div>I-OXH <u>4.1</u></div></div>					
				<div><div>I-OXH <u>2.6</u></div></div>					
				<div><div>I-OXH <u>1.6</u></div></div>					
				<div><div>1800</div></div>					
				<div><div>2800</div></div>					
				<div><div>231°</div></div>					
				<div><div>053°</div></div>					
				<div><div>233°</div></div>					
				<div><div>3500</div></div>					
				<div><div>GS 3.00°</div><div>TCH 52</div></div>					
				<div><div>1 NM</div></div>					
				<div><div>1.5</div></div>					
				<div><div>3.1 NM</div></div>					
				<div><div>8.4 NM</div></div>					
CATEGORY		A		B		C		D	
S-ILS 23L				1165/40 200 (200-¾)					
S-LOC 23L				1320/55 355 (400-1)					
CIRCLING		1500-1 514 (600-1)		1620-1 634 (700-1)		1660-2 674 (700-2)		1900-3 914 (1000-3)	

ILS or LOC RWY 23L

SE-1, 10 JUL 2025 to 07 AUG 2025