

LOC I-BUI	APP CRS	Rwy Idg	<b>9495</b>
<b><u>111.7</u></b>	<b>231°</b>	TDZE	<b>984</b>
		Apt Elev	<b>986</b>

ILS RWY 23R (CAT II)  
MC GHEE TYSON (TYS)

DME or RADAR required.

ALSF-2

**MISSED APPROACH:** Climb to 2000 then climbing right turn to 4000 on heading 240° and VXV VORTAC R-231 to GROSS INT/VXV 29.1 DME and hold.

ATIS  
128.35

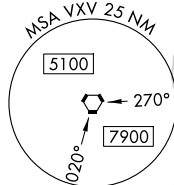
KNOXVILLE APP CON  
123.9 360.8


NOXVILLE TOWER  
121.2 257.8

GND CON	
121.9	348.6

CLNC DEL  
121.65

CAUTION: RIZEN OM for Downtown Island  
Rwy 26 may be received prior to BUZBY OM.



VOLUNTEER  
116.4 VXV   
Chn 111

VXV 2.5  
RADAR

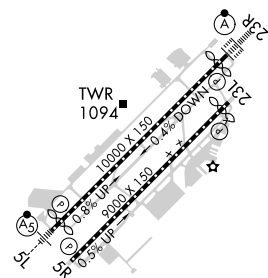
NoPT for arrival at NEYLN on  
V466-519 southwest bound.

3379 A

## MISSED APCH FIX

GROSS  
VXV 291 77

ELEV 986	<b>D</b>	TDZE 984
----------	----------	----------



HIRL Rwy 5L-23R and 5R-23L  
REIL Rwy 5R and 23L  
TDZ/CL Rwy 5R and 23R

2000 ↑	4000 hdg 240°	VXV R-231	GROSS △
-----------	---------------------	--------------	------------

### One Minute Holding Pattern

CATEGORY	A	B	C	D
S-ILS 23R	RA 103/12 100 DA 1084			

CATEGORY II ILS - SPECIAL AIRCREW  
& AIRCRAFT CERTIFICATION REQUIRED