
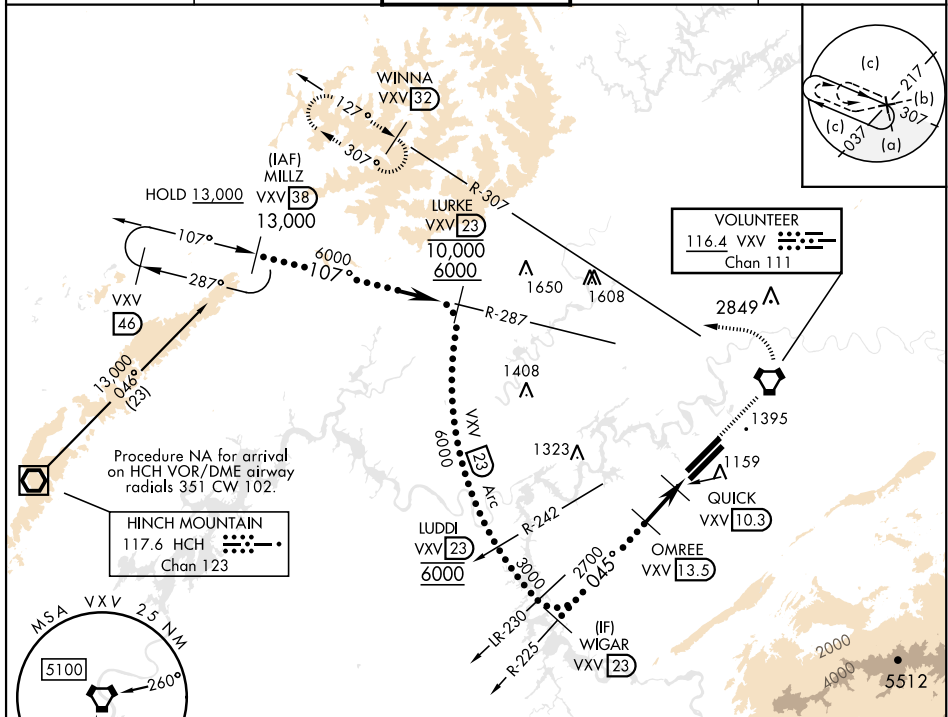


KNOXVILLE, TENNESSEE

HI-VOR or TACAN RWY 5L

VORTAC VXV 116.4 Chan 111		APCH CRS 045°		Rwy Idg 9508 TDZE 953 Arpt Elev 986		[USAF]		MC GHEE TYSON (KTSY)	
DME required ▼ *When ALS inop, increase vis to 1½ miles.					MALSR 		MISSED APPROACH: Climb to 6000 direct to VXV VORTAC, then on VXV R-307 to WINNA/VXY 32 DME and hold.		
ATIS 128.35		KNOXVILLE APP CON 123.9 360.8		KNOXVILLE TOWER 121.2 257.8		GND CON 121.9 348.6		CLNC DEL 121.65	



EMERG SAFE ALT 100 NM 8900

6000	VXV	VXV	WINNA
↑	R-307	VXV	32

WIGAR VXV 23 3000 045° 2700

OMREE VXV 13.5 2700

QUICK VXV 10.3 1700

ZIPDO VXV 8.5 1700

3.00° TCH 55

3.2 NM 1.8 NM 0.4

CATEGORY	C	D	E
S-5L*	1480/55	527	(600-1)

CIRCLING	1660-2 674 (700-2)	1900-3	914 (1000-3)
----------	-----------------------	--------	--------------

WIGAR VXV 23 3000 045° 2700

OMREE VXV 13.5 2700

QUICK VXV 10.3 1700

ZIPDO VXV 8.5 1700

3.00° TCH 55

3.2 NM 1.8 NM 0.4

WIGAR VXV 23 3000 045° 2700

OMREE VXV 13.5 2700

QUICK VXV 10.3 1700

ZIPDO VXV 8.5 1700

3.00° TCH 55

3.2 NM 1.8 NM 0.4

KNOXVILLE, TENNESSEE

35°49'N-84°00'W

MC GHEE TYSON (KTYS)

Amdt 4 12AUG21

HI-VOR or TACAN RWY 5L

SE-1, 10 JUL 2025 to 07 AUG 2025

SE-1, 10 JUL 2025 to 07 AUG 2025