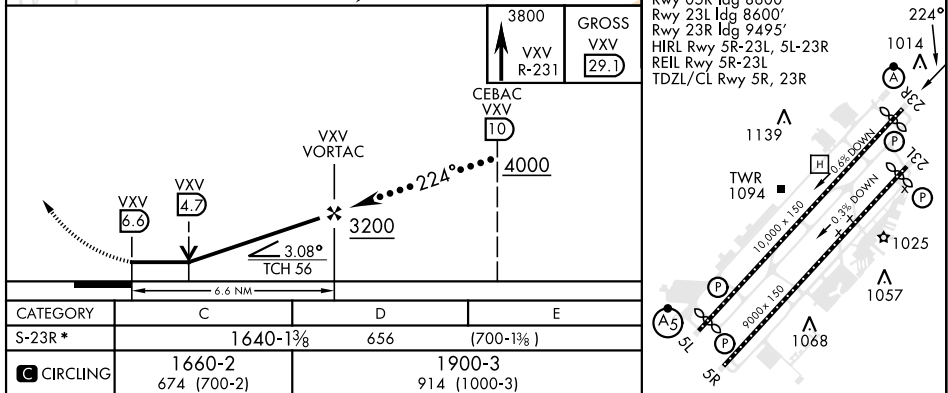
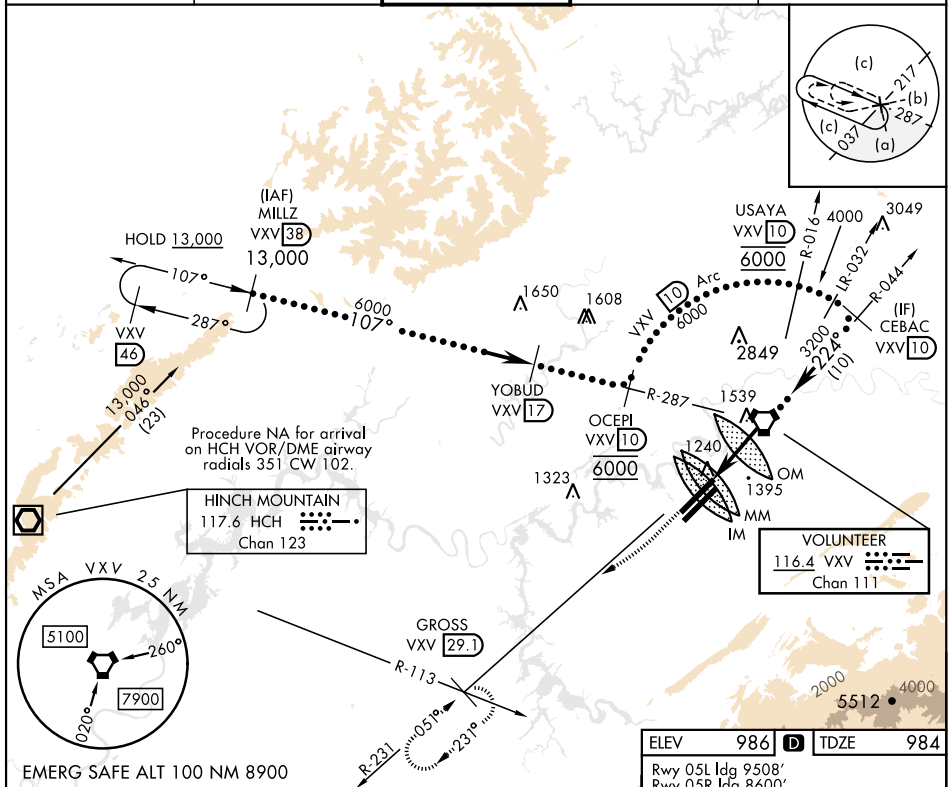


KNOXVILLE, TENNESSEE

HI-VOR or TACAN RWY 23R

VORTAC XVY <b>116.4</b> Chan <b>111</b>		APCH CRS <b>224°</b>	Rwy Idg <b>9495</b> TDZE <b>984</b> Arpt Elev <b>986</b>	[USAF]		MC GHEE TYSON (KTSY)	
DME required ▼ * When ALS inop, increase vis to 1½ miles.				ALSF-2 ⓐ		MISSED APPROACH: Climb to 3800 direct on XVY VORTAC R-231 to GROSS/29.1 DME and hold.	
ATIS <b>128.35</b>		KNOXVILLE APP CON <b>123.9 360.8</b>		KNOXVILLE TOWER <b>121.2 257.8</b>		GND CON <b>121.9 348.6</b>	CLNC DEL <b>121.65</b>



KNOXVILLE, TENNESSEE

35°49'N-84°00'W

MC GHEE TYSON (KTYS)

Amdt 4 21AUG21

HI-VOR or TACAN RWY 23R

SE-1. 10 JUL 2025 to 07 AUG 2025

SE-1, 10 JUL 2025 to 07 AUG 2025