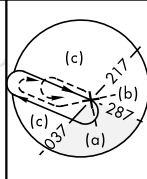


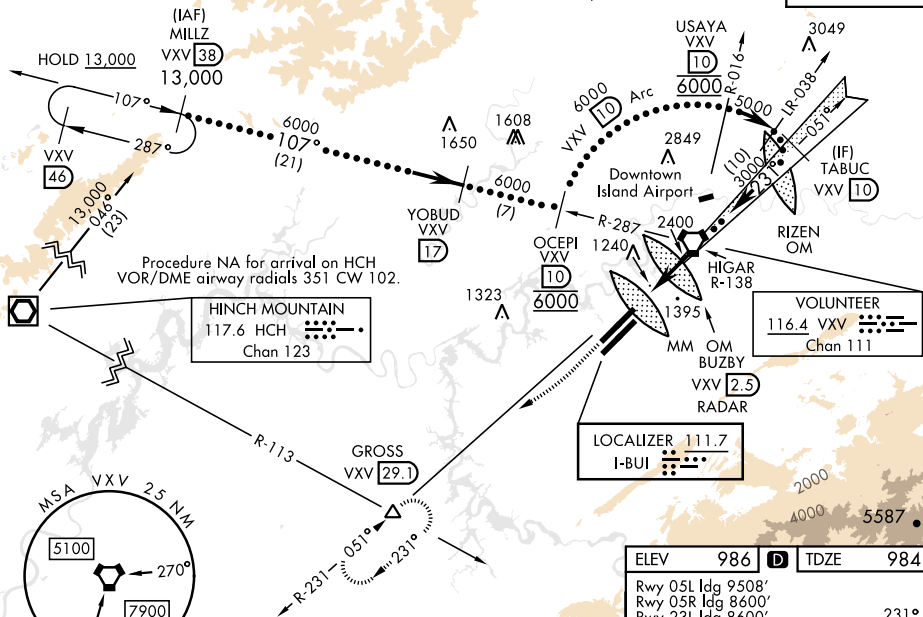
## HI-ILS or LOC RWY 23R

LOC I-BUI <b>111.7</b>	APCH CRS <b>231°</b>	Rwy Idg TDZE Arpt Elev <b>9495</b> <b>984</b> <b>986</b>	[USAF]	MC GHEE TYSON (KTYS)
DME required			ALS-F-2	MISSED APPROACH: Climb to 2000 then climbing right turn to 4000 on heading 240° and XVY VORTAC R-231 to GROSS/VXV 29.1 DME and hold.
▼ * When ALS inop, increase CAT E RVR to 40, vis to ¾ mile. ** When ALS inop, increase vis to 1 ½ miles.				
ATIS <b>128.35</b>	KNOXVILLE APP CON <b>123.9 360.8</b>	KNOXVILLE TOWER <b>121.2 257.8</b>	GND CON <b>121.9 348.6</b>	CLNC DEL <b>121.65</b>

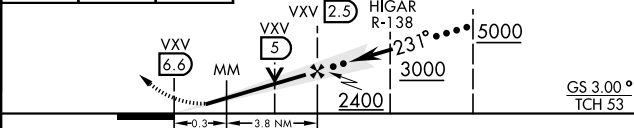
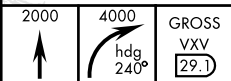
RVR 1800 authorized with use of FD or AP or HUD to DA (NA when using altimeter setting).



CAUTION: RIZEN OM  
for Downtown Island for  
Rwy 26 may be recieved  
prior to BUZBY OM.



EMERG SAFE ALT 100 NM 8900



CATEGORY	C	D	E
S-ILS 23R *	1184/1800	200	(200-½)
S-LOC 23R**	1560-1¼	576	(600-1¼)
CIRCLING	1660-2 674 (700-2)	1900-3	914 (1000-3)

ELEV 986 **D** TDZE 984

Rwy 05L Idg 9508'  
 Rwy 05R Idg 8600'  
 Rwy 23L Idg 8600'  
 Rwy 23R Idg 9495'  
 HIRL Rwy 5R-23L, 5L-23R  
 REIL Rwy 5R-23L  
 TDZL/CL Rwy 5R, 23R

1139 A  
 TWR 1094  
 10,000 x 150  
 9,000 x 150  
 1068 A  
 1057 A  
 1025  
 23R  
 23L  
 5L  
 5R  
 231°  
 1014 A  
 0.6% DOWN  
 0.3% DOWN

## HI-ILS or LOC RWY 23R