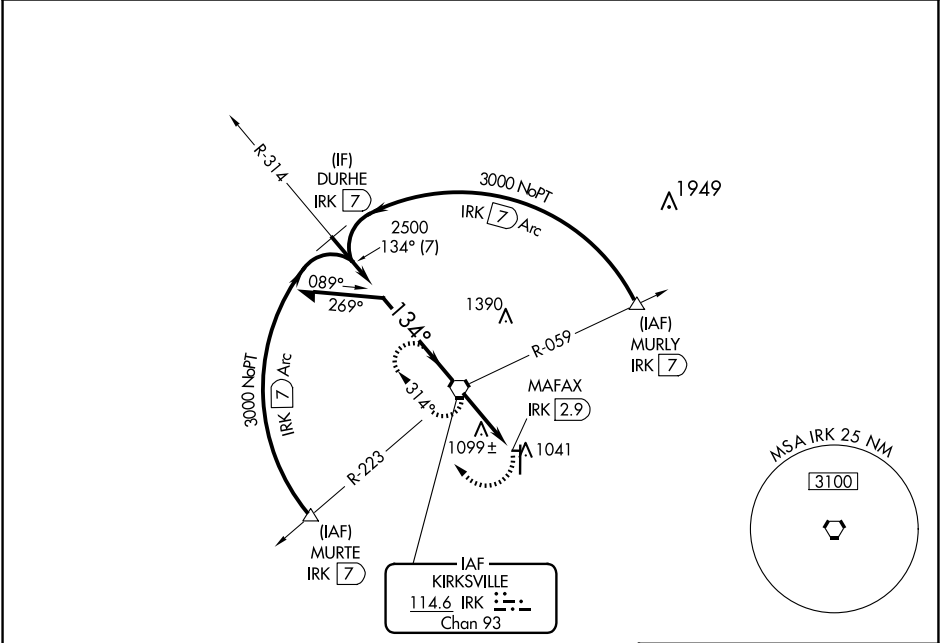


VORTAC IRK	Rwy Idg	N/A
114.6	TDZE	N/A
Chan 93	App CRS	134°
	Apt Elev	966

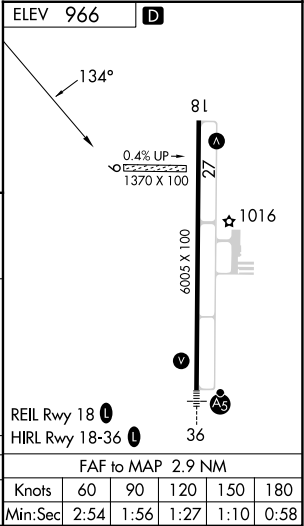
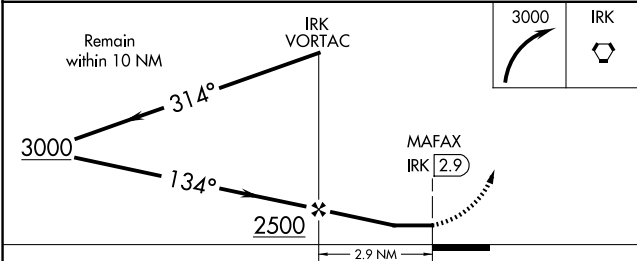
VOR-A  
KIRKSVILLE RGNL (IRK)

<div><div></div><div>Circling NA to Rws 9 and 27.</div></div>	<div>MISSED APPROACH: Climbing right turn to 3000 direct IRK VORTAC and hold, continue climb-in-hold to 3000.</div>
---	---

ASOS 121.125	KANSAS CITY CENTER 132.6 370.9	UNICOM 122.8 (CTAF) 0
-----------------	-----------------------------------	--------------------------



NoPT for arrivals at IRK VORTAC on airway radials 259 CW 007.



CATEGORY	A	B	C	D	FAF to MAP 2.9 NM					
CIRCLING	1400-1	1440-1	1460-1½	1540-2	Knots	60	90	120	150	180
	434 (500-1)	474 (500-1)	494 (500-1½)	574 (600-2)	Min:Sec	2:54	1:56	1:27	1:10	0:58