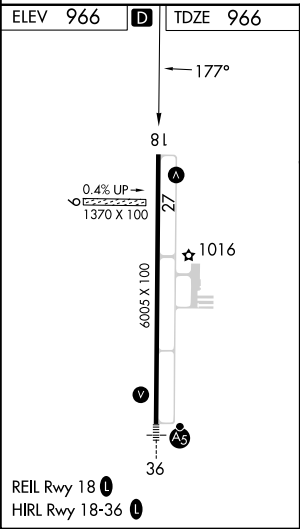
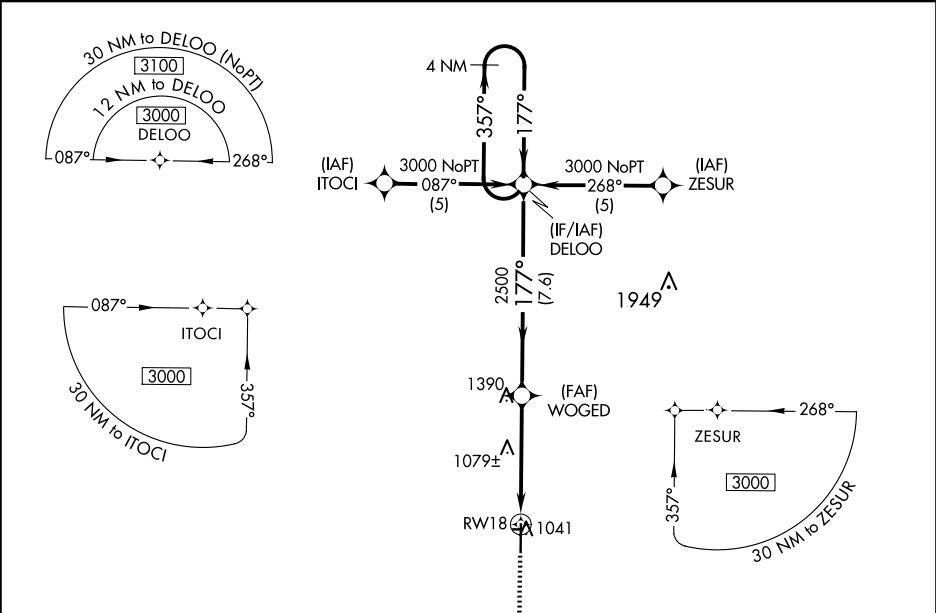


APP CRS	Rwy Idg	6005
177°	TDZE	966
	Apt Elev	966

RNAV (GPS) RWY 18  
KIRKSVILLE RGNL (IRK)

RNP APCH.	MISSED APPROACH: Climb to 3000 direct HOROK and hold.
Circling NA to Rwy 9 and 27. Rwy 18 helicopter visibility reduction below ¾ SM NA.	

ASOS 121.125	KANSAS CITY CENTER 132.6 370.9	UNICOM 122.8 (CTAF) 0
-----------------	-----------------------------------	--------------------------



			<div>MISSED APCH FIX</div> <div><div>HOROK</div></div>			
<div>3000</div> <div></div>		<div>HOROK</div> <div></div>	<div>VGSI and descent angles not coincident (VGSI Angle 3.00/TCH 33).</div> <div>4 NM Holding Pattern</div>			
CATEGORY	A		B		C	D
LNAV MDA	1340-1 374 (400-1)					1340-1¼ 374 (400-1¼)
CIRCLING	1400-1 434 (500-1)	1440-1 474 (500-1)	1460-1½ 494 (500-1½)	1540-2 574 (600-2)		

NC-3, 10 JUL 2025 to 07 AUG 2025

NC-3, 10 JUL 2025 to 07 AUG 2025