

KINGMAN, ARIZONA

AL-215 (FAA)

24361

WAAS CH 70612 W21A	APP CRS 213°	Rwy Idg 6827 TDZE 3403 Apt Elev 3449
--	------------------------	---

APP CRS
213°

Rwy Idg	6827
TDZE	3403
Apt Elev	3449

RNAV (GPS) Z RWY 21
KINGMAN (IGM)

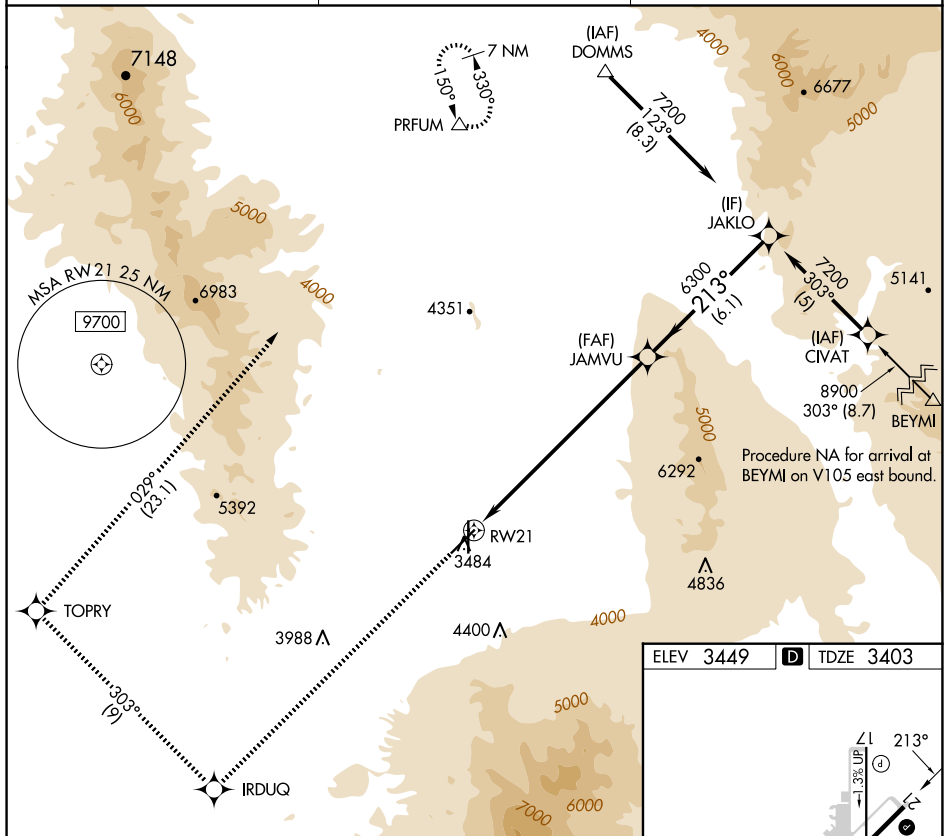
RNP APCH - GPS.

ANA

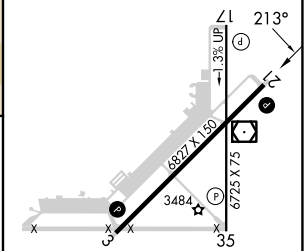
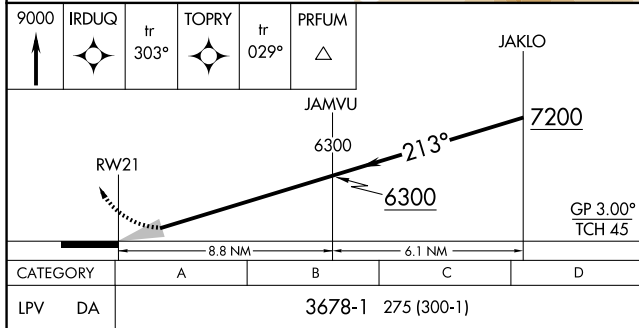
MISSED APPROACH: Climb to 9000 direct IRDUQ and on track 303° to TOPRY and on track 029° to PRFUM and hold.

ASOS
119.275

LOS ANGELES CENTER
124.85 319.2

UNICOM
122.8 (CTAF) **L**

ELEV 3449	D	TDZE 3403
-----------	----------	-----------



KINGMAN, ARIZONA
Orig-D 26DEC24

35°16'N-113°56'W

KINGMAN (IGM)

RNAV (GPS) Z RWY 21

SW-4, 10 JUL 2025 to 07 AUG 2025