

VOR/DME RWY 26

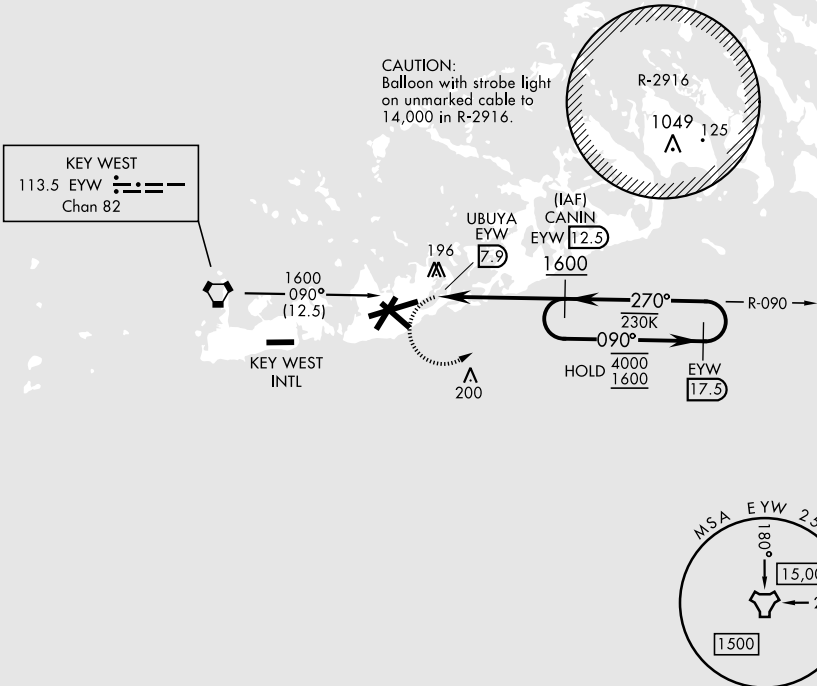
EYW VORTAC 113.5 Chan 82	APCH CRS 270°	Rwy Idg 10,001 TDZE 6 Arpt Elev 6
--------------------------------	------------------	---

[USN]

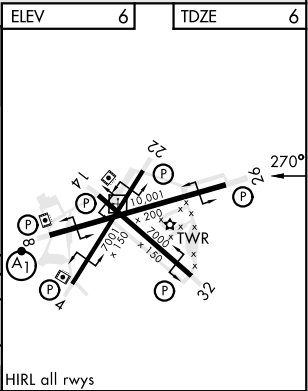
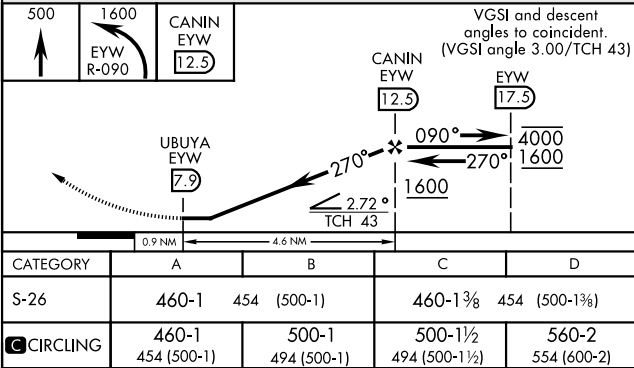
KEY WEST NAS (BOCA CHICA FLD) (KNQX)

RADAR required		MISSED APPROACH: Climb to 500, then climbing left turn to 1600 to intercept EYW VORTAC R-090 to CANIN and hold.			
ATIS ★ 307.025	NAVY KEY WEST APP CON 124.025 313.7	NAVY KEY WEST TOWER ★ 118.575 340.25	GND CON 121.7 336.45	CLNC DEL 121.2 357.4	ASR/PAR

CAUTION: Final approach course crosses the extended runway centerline 5018' from threshold.



EMERG SAFE ALT 100 NM 15,000



VOR/DME RWY 26

SE-3, 10 JUL 2025 to 07 AUG 2025

SE-3, 10 JUL 2025 to 07 AUG 2025