

TACAN Y RWY 4

TACAN NQX Chan 78	APCH CRS 044°	Rwy Idg 7001 TDZE 4 Arpt Elev 6
-----------------------------	-------------------------	--

[USN]

KEY WEST NAS (BOCA CHICA FLD) (KNQX)

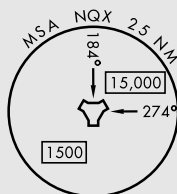
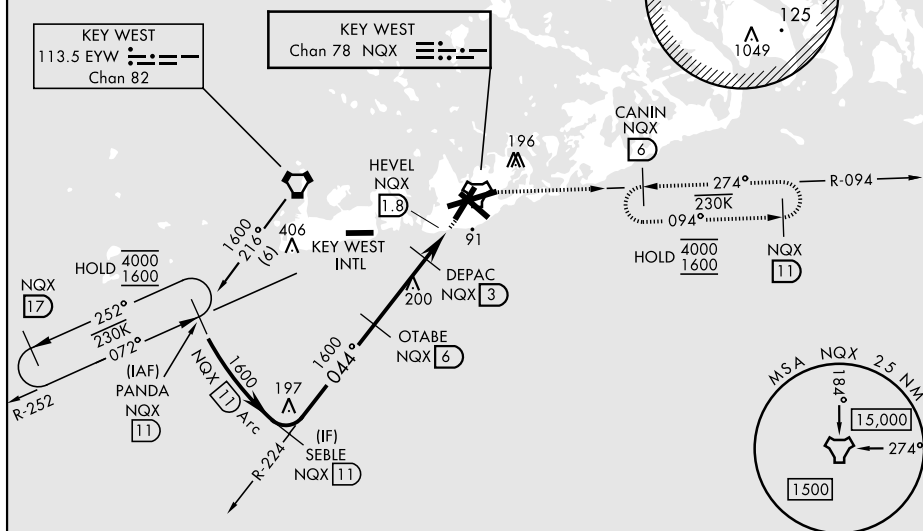
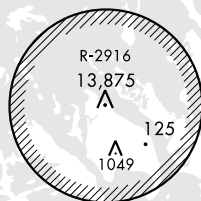


MISSED APPROACH: Climb to 1600 via NQX TACAN R-224 to NQX, then via NQX R-094 to CANIN and hold.

ATIS ★ 307.025	NAVY KEY WEST APP CON 124.025 313.7	NAVY KEY WEST TOWER ★ 118.575 340.25	GND CON 121.7 336.45	CLNC DEL 121.2 357.4	ASR/PAR
-------------------	--	--	-------------------------	-------------------------	---------

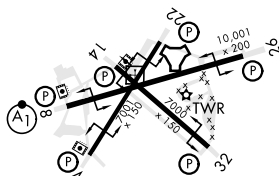
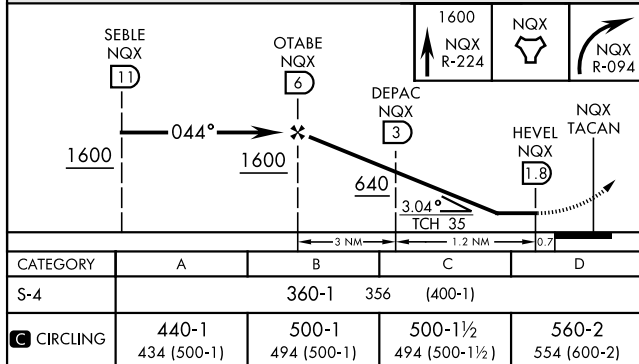
CAUTION: Short Intermediate Segment

CAUTION:
Balloon with strobe light
on unmarked cable to
14,000 in R-2916.



EMERG SAFE ALT 100 NM 15,000

ELEV	6		TDZE	4
------	---	--	------	---



| HIRL all rwys

KEY WEST, FLORIDA

24°34'N-81°41'W

KEY WEST NAS (BOCA CHICA FLD) (KNQX)

Orig 23FEB23

TACAN Y RWY 4

SE-3, 10 JUL 2025 to 07 AUG 2025

SE-3, 10 JUL 2025 to 07 AUG 2025