

KEY WEST, FLORIDA

RNAV (GPS) RWY 8

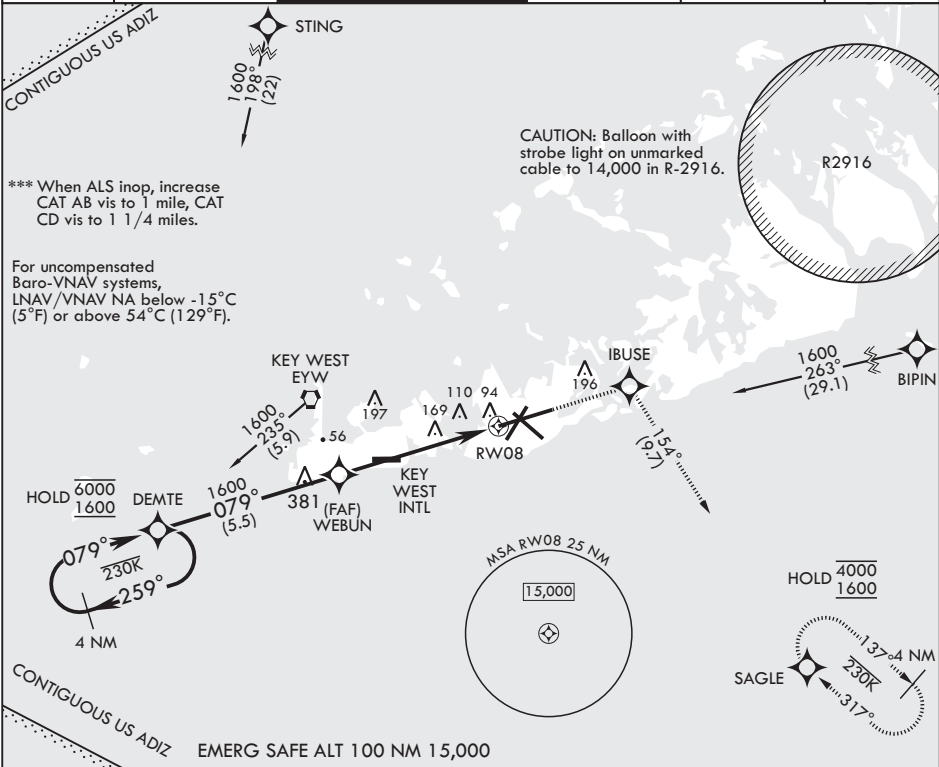
WAAS CH 65107 W08A	APCH CRS 079°	Rwy ldg TDZE Arprt Elev	10,001 4 6
--------------------------	------------------	-------------------------------	------------------

- (USN)

KEY WEST NAS (BOCA CHICA FLD) (KNQX)

RNP APCH	ALSIF-1	MISSED APPROACH: (Do not exceed 230 KIAS until IBUSE) Climb to 1600 direct IBUSE, track 154° to SAGLE and hold.
* When ALS inop, increase vis to ¾ mile. ** When ALS inop, increase vis to 1 1/4 miles.		

ATIS★ 307.025	APP CON 124.025 313.7	NAVY KEY WEST TOWER★ 118.575 340.25	GND CON 121.7 336.45	CLNC DEL 121.2 357.4	ASR/PAR
------------------	--------------------------	--	-------------------------	-------------------------	---------



4 NM Holding Pattern		1600 IBUSE tr 154°		ELEV 6	TDZE 4
GP 3.00° TCH 45		DEMETE WEBUN		126	
6000 1600 259° 079°		1.2 NM to RW08		127 22 14 13 12 11 10 9 8 7 6 5 4 3 2 1	
4.9 NM		7001 x 150 7000 x 150		BCN TWR	
CATEGORY	A	B	C	D	
LPV DA*	204-½	200	(200-½)		
LNAV/VNAV DA**	427-¾	423	(500-¾)		
LNAV MDA***	440-½ 436 (500-½)	440-¾ 436 (500-¾)	500-1½ 494 (500-1½)	560-2 554 (600-2)	
CIRCLING	440-1 434 (500-1)	500-1 494 (500-1)	500-1½ 494 (500-1½)	560-2 554 (600-2)	HIRL all rwys

KEY WEST, FLORIDA

24°34'N - 81°41'W

KEY WEST NAS (BOCA CHICA FLD) (KNQX)

Amdt 3 23FEB23

RNAV (GPS) RWY 8

SE-3, 10 JUL 2025 to 07 AUG 2025

SE-3, 10 JUL 2025 to 07 AUG 2025