

## KEY WEST, FLORIDA

## RNAV (GPS) RWY 32

- (USN)

KEY WEST NAS (BOCA CHICA FLD) (KNQX)

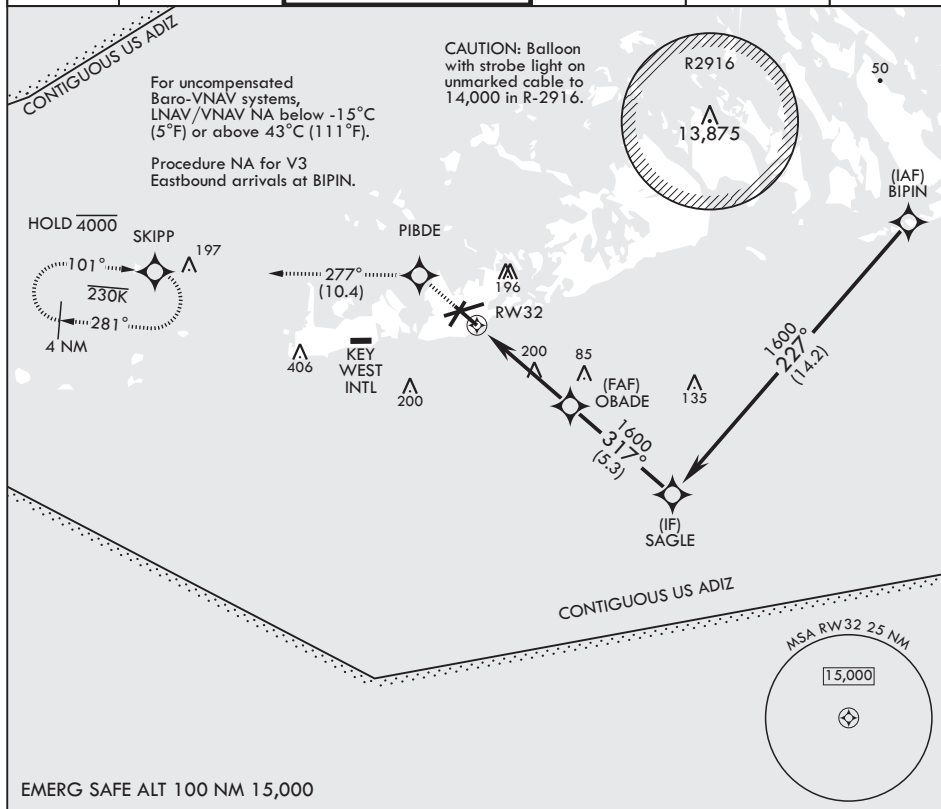
APCH CRS 317°	Rwy Idg TDZE Arpt Elev	7000 4 6
------------------	------------------------------	----------------

RNP APCH

**MISSED APPROACH:** (Do not exceed 230 KIAS until PIBDE.) Climb to 1600 direct PIBDE, track 277° to SKIPP and hold, continue climb-in-hold to 1600.



ATIS ★ 307.025	APP CON 124.025 313.7	NAVY KEY WEST TOWER ★ 118.575 340.25	GND CON 121.7 336.45	CLNC DEL 121.2 357.4	ASR/PAR
-------------------	--------------------------	---	-------------------------	-------------------------	---------



113.1 MHz  
317°  
3.00°  
TCH 45  
1600  
1.3 NM to RW32  
4.9 NM  
RW32  
OBAD E  
SAGLE  
BIPIN  
GP 3.00°  
TCH 45  
1600  
CATEGORY A B C D  
LNAV/VNAV DA 254-3/4 250 (300-3/4)  
LNAV MDA 460-1 456 (500-1) 460-1 7/8 456 (500-1 7/8) 560-2  
CIRCLING 460-1 454 (500-1) 500-1 494 (500-1) 500-1 1/2 494 (500-1 1/2) 554 (600-2) 560-2  
HIRL all rwys

KEY WEST, FLORIDA

24°34'N - 81°41'W

KEY WEST NAS (BOCA CHICA FLD) (KNQX)

Amdt 2 23FEB23

## RNAV (GPS) RWY 32

SE-3, 10 JUL 2025 to 07 AUG 2025

SE-3, 10 JUL 2025 to 07 AUG 2025