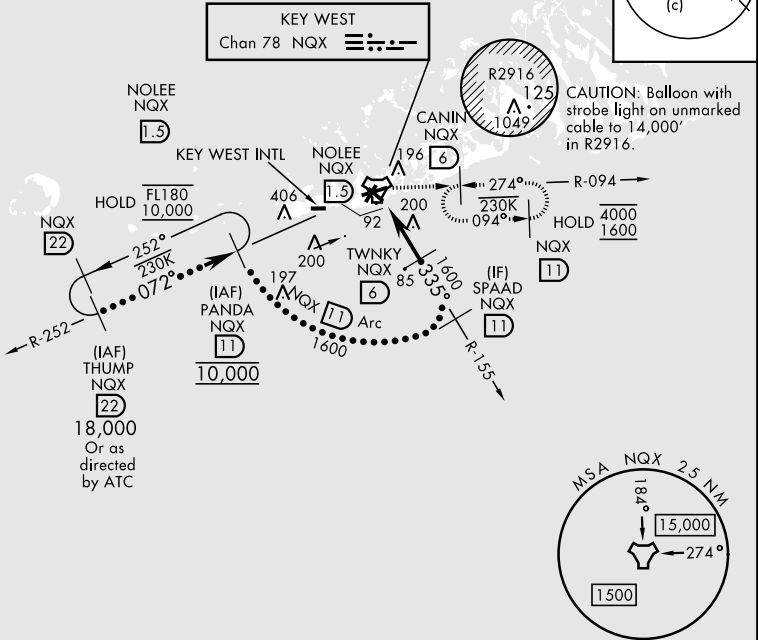


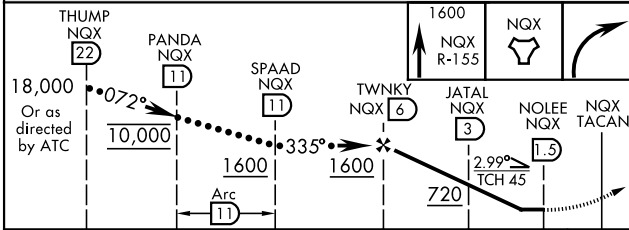
HI-TACAN Z RWY 32

TACAN Chan <b>78</b>	APCH CRS <b>335°</b>	Rwy Idg TDZE Arpt Elev <b>7000</b> <b>4</b> <b>6</b>	[USN]	KEY WEST NAS (BOCA CHICA FLD)	(KNQX)	
RADAR required			MISSED APPROACH: Climb to 1600 via NQX TACAN R-155 to NQX, then climbing right turn to CANIN and hold.			
<div>▼</div>						
ATIS ★ <b>307.025</b>	NAVY KEY WEST APP CON <b>124.025 313.7</b>		NAVY KEY WEST TOWER ★ <b>118.575 340.25</b>	GND CON <b>121.7 336.45</b>	CLNC DEL <b>121.2 357.4</b>	ASR/PAR

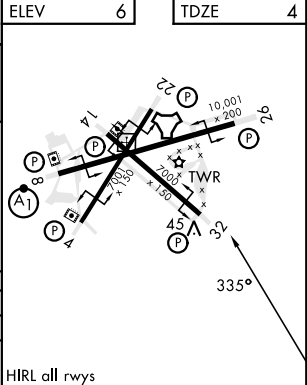
CAUTION: Short Intermediate Segment



EMERG SAFE ALT 100 NM 15,000



CATEGORY	C	D	E
S-32	360-1	356	(400-1)
CIRCLING	500-1½ 494 (500-1½)	560-2	554 (600-2)



HI-TACAN Z RWY 32

SE-3, 10 JUL 2025 to 07 AUG 2025

SE-3, 10 JUL 2025 to 07 AUG 2025