
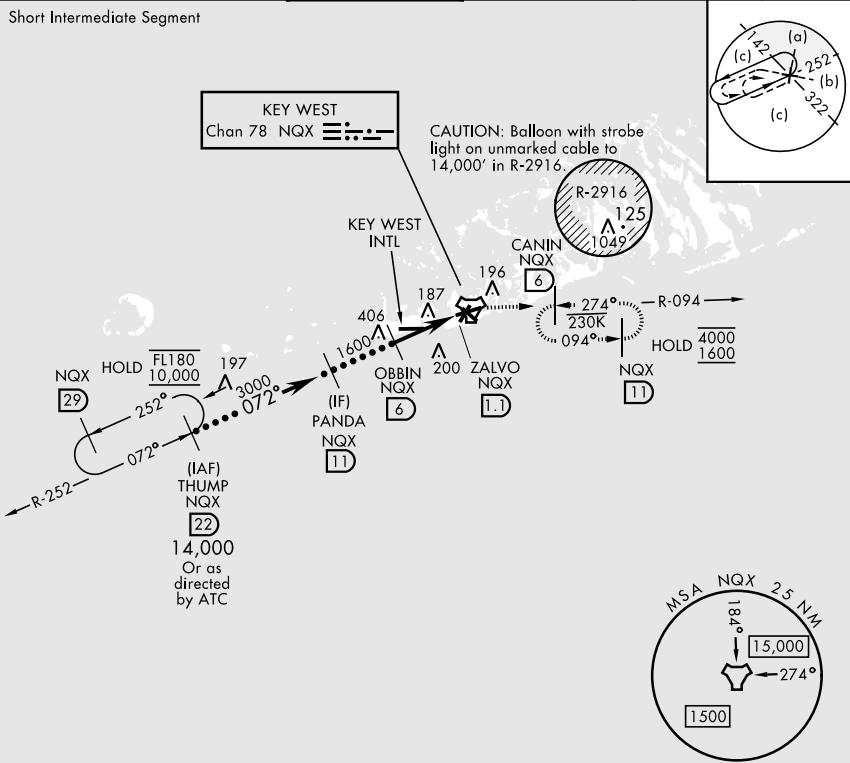


KEY WEST, FLORIDA

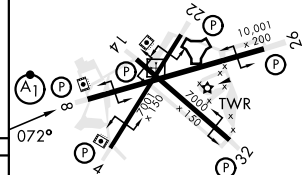
# HI-TACAN X RWY 8

TACAN Chan <b>78</b>	APCH CRS <b>072°</b>	Rwy Idg <b>10,001</b> TDZE <b>4</b> Arpt Elev <b>6</b>	[USN]	KEY WEST NAS (BOCA CHICA FLD) (KNQX)			
RADAR required ▼ * When ALS inop, increase vis to 1¼ miles.			ALSF-1 	MISSED APPROACH: Climb to 1600 via R-252 to NQX TACAN then via R-094 to CANIN (NQX R-094/6 DME) and hold.			
ATIS ★ <b>307.025</b>	NAVY KEY WEST APP CON <b>124.025 313.7</b>		NAVY KEY WEST TOWER ★ <b>118.575 340.25</b>		GND CON <b>121.7 336.45</b>	CLNC DEL <b>121.2 357.4</b>	ASR/PAR

CAUTION: Short Intermediate Segment



EMERG SAFE ALT 100 NM 15,000

THUMP NQX 22		PANDA NQX 11		OBBIN NQX 6		1600 NQX R-252		NQX R-094		ELEV 6		TDZE 4	
14,000 Or as directed by ATC		072° 3000		1600		2.97° TCH 44		NQX 2.3 ZALVO NQX 1.1		NQX TACAN			
CATEGORY		C		D		E							
S-8 *		440-¾		436		(500-¾)							
CIRCLING		500-1½ 494 (500-1½)		560-2		554 (600-2)						HIRL all rwys	

# HI-TACAN X RWY 8